

## Product datasheet for **TA317635**

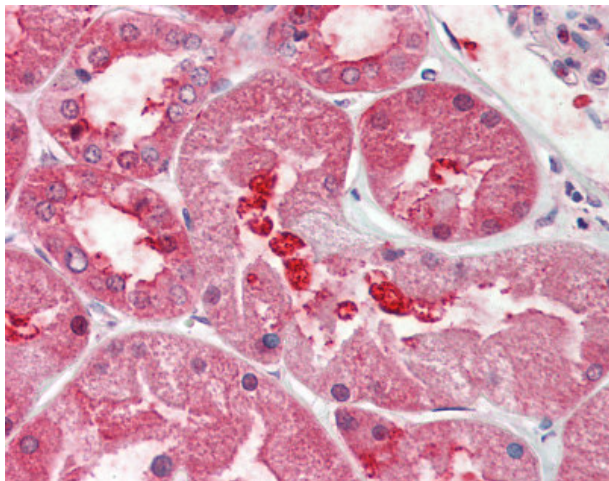
### GPRC6A Rabbit Polyclonal Antibody

#### Product data:

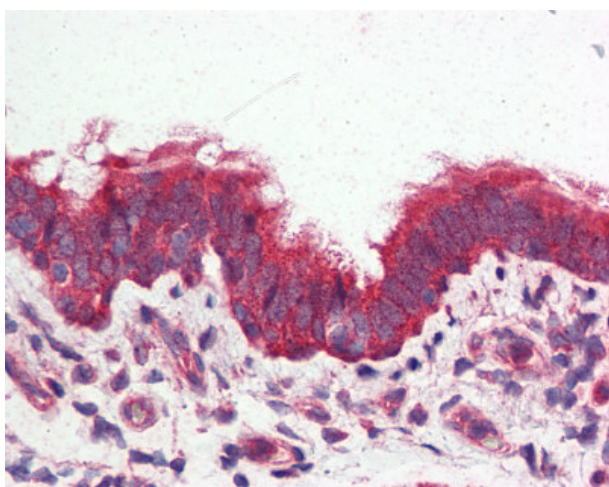
Product Type:	Primary Antibodies
Applications:	IHC
Recommended Dilution:	IHC-P (5 µg/ml)
Reactivity:	Gorilla, Human (Predicted: Rat, Hamster, Rabbit)
Host:	Rabbit
Isotype:	IgG
Clonality:	Polyclonal
Immunogen:	GPRC6A antibody was raised against synthetic 14 amino acid peptide from N-terminal extracellular domain of human GPRC6A. Percent identity with other species by BLAST analysis: Human, Gorilla (100%); Rat, Hamster, Rabbit (93%); Monkey, Marmoset, Mouse, Dog, Elephant, Panda, Horse (86%).
Formulation:	PBS, 0.1% sodium azide.
Concentration:	lot specific
Purification:	Immunoaffinity Chromatography
Conjugation:	Unconjugated
Storage:	Store at -20°C as received.
Stability:	Stable for 12 months from date of receipt.
Gene Name:	G protein-coupled receptor class C group 6 member A
Database Link:	<a href="#">NP_683766</a> <a href="#">Entrez Gene 294394 Rat</a> <a href="#">Entrez Gene 222545 Human</a> <a href="#">Q5T6X5</a>
Synonyms:	bA86F4.3; GPCR
Note:	Specific for Human GPRC6A. BLAST analysis of the peptide immunogen showed no homology with other human proteins.
Protein Families:	Druggable Genome, Transmembrane



[View online »](#)

**Product images:**

Anti-GPRC6A antibody IHC of human kidney. Immunohistochemistry of formalin-fixed, paraffin-embedded tissue after heat-induced antigen retrieval.



Anti-GPRC6A antibody IHC of human lung, respiratory epithelium. Immunohistochemistry of formalin-fixed, paraffin-embedded tissue after heat-induced antigen retrieval.