

## Product datasheet for **TA317633**

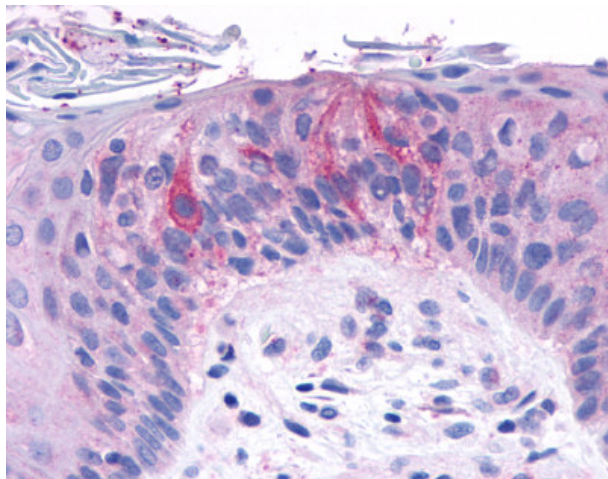
### TAS1R2 Rabbit Polyclonal Antibody

#### Product data:

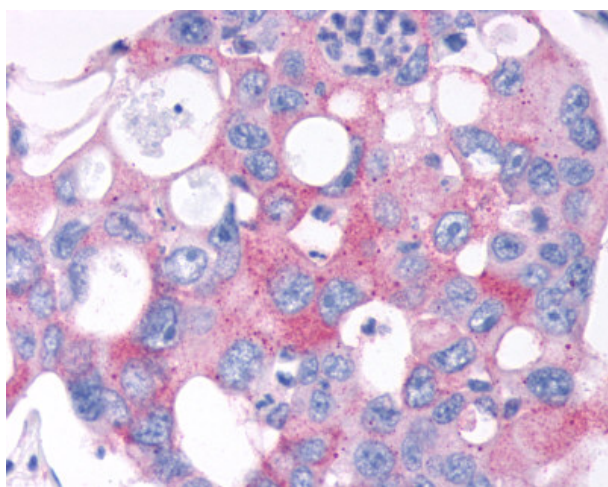
Product Type:	Primary Antibodies
Applications:	IHC
Recommended Dilution:	IHC-P (5 - 9 µg/ml)
Reactivity:	Human
Host:	Rabbit
Isotype:	IgG
Clonality:	Polyclonal
Immunogen:	TAS1R2 / T1R2 antibody was raised against synthetic 20 amino acid peptide from N-terminal extracellular domain of human TAS1R2. Percent identity with other species by BLAST analysis: Human (100%); Chimpanzee, Gorilla, Orangutan, Gibbon (95%); Baboon, Monkey (85%).
Formulation:	PBS, 0.1% sodium azide.
Concentration:	lot specific
Purification:	Immunoaffinity Chromatography
Conjugation:	Unconjugated
Storage:	Store at -20°C as received.
Stability:	Stable for 12 months from date of receipt.
Gene Name:	taste 1 receptor member 2
Database Link:	<a href="#">NP_689418</a> <a href="#">Entrez Gene 80834 Human</a> <a href="#">Q8TE23</a>
Synonyms:	GPR71; T1R2; TR2
Note:	Specific for Human TAS1R2. BLAST analysis of the peptide immunogen showed no homology with other human proteins.
Protein Families:	Druggable Genome, Transmembrane
Protein Pathways:	Taste transduction



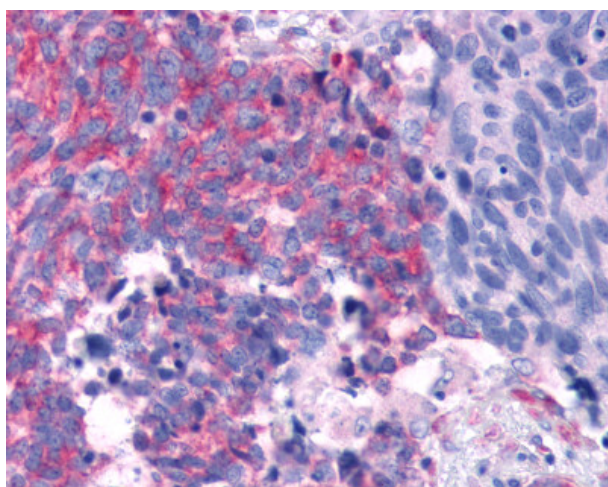
[View online »](#)

**Product images:**

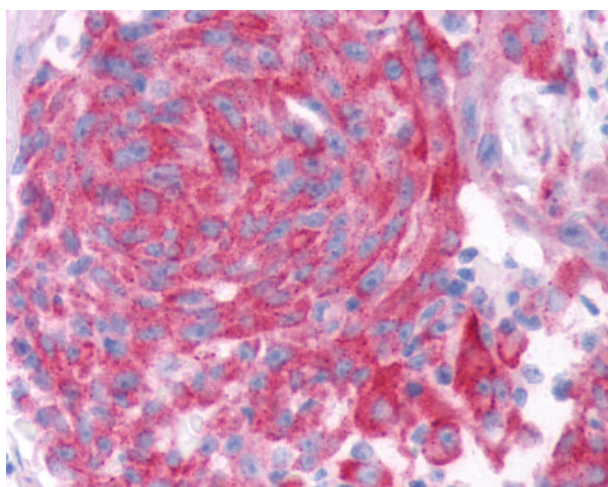
Anti-TAS1R2 antibody IHC of human taste receptor cells. Immunohistochemistry of formalin-fixed, paraffin-embedded tissue after heat-induced antigen retrieval.



Anti-TAS1R2 / T1R2 antibody IHC of human Colon, Carcinoma. Immunohistochemistry of formalin-fixed, paraffin-embedded tissue after heat-induced antigen retrieval.



Anti-TAS1R2 / T1R2 antibody IHC of human Lung, Small Cell Carcinoma. Immunohistochemistry of formalin-fixed, paraffin-embedded tissue after heat-induced antigen retrieval.



Anti-TAS1R2 / T1R2 antibody IHC of human Skin, Melanoma. Immunohistochemistry of formalin-fixed, paraffin-embedded tissue after heat-induced antigen retrieval.