

## Product datasheet for **TA317631**

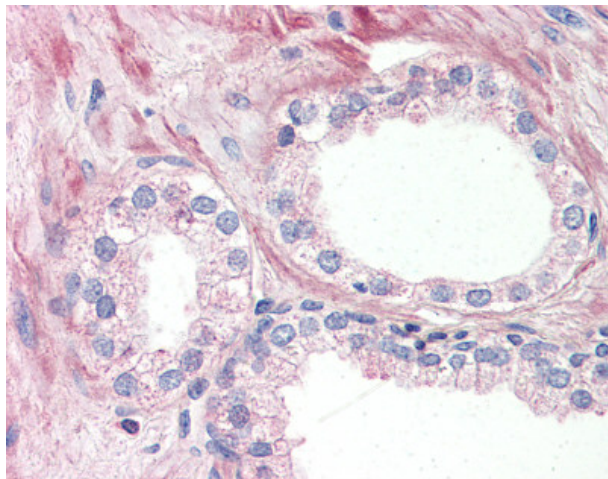
### GPR 164 (OR51E1) Rabbit Polyclonal Antibody

#### Product data:

Product Type:	Primary Antibodies
Applications:	IHC
Recommended Dilution:	ELISA, IHC-P (15 - 20 µg/ml)
Reactivity:	Gorilla, Human (Predicted: Monkey)
Host:	Rabbit
Isotype:	IgG
Clonality:	Polyclonal
Immunogen:	OR51E1 antibody was raised against synthetic 17 amino acid peptide from internal region of human OR51E1. Percent identity with other species by BLAST analysis: Human, Gorilla (100%); Monkey (94%); Marmoset, Mouse, Hamster, Rabbit (88%); Gibbon, Galago, Rat (82%).
Formulation:	PBS, 0.1% sodium azide.
Concentration:	lot specific
Purification:	Immunoaffinity Chromatography
Conjugation:	Unconjugated
Storage:	Store at -20°C as received.
Stability:	Stable for 12 months from date of receipt.
Gene Name:	olfactory receptor family 51 subfamily E member 1
Database Link:	<a href="#">NP_689643</a> <a href="#">Entrez Gene 717598 Monkey</a> <a href="#">Entrez Gene 143503 Human</a> <a href="#">Q8TCB6</a>
Synonyms:	D-GPCR; DGPCR; GPR136; GPR164; OR51E1P; OR52A3P; POGR; PSGR2
Note:	Specific for Human OR51E1. BLAST analysis of the peptide immunogen showed no homology with other human proteins.
Protein Families:	Druggable Genome, GPCR, Transmembrane
Protein Pathways:	Olfactory transduction



[View online »](#)

**Product images:**

Anti-OR51E1 antibody IHC of human prostate. Immunohistochemistry of formalin-fixed, paraffin-embedded tissue after heat-induced antigen retrieval.