

Product datasheet for **TA317628**

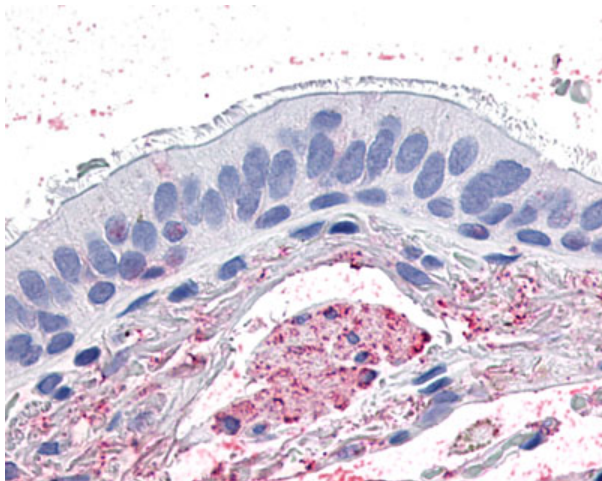
GPR4 Rabbit Polyclonal Antibody

Product data:

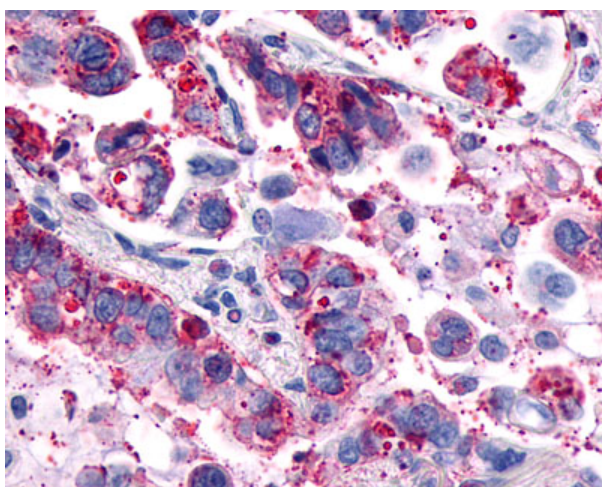
| | |
|-----------------------|---|
| Product Type: | Primary Antibodies |
| Applications: | IHC |
| Recommended Dilution: | ICC, IHC-P (15 µg/ml) |
| Reactivity: | Dog, Human, Monkey, Pig, Gibbon (Predicted: Bat, Bovine, Rabbit, Zebrafish) |
| Host: | Rabbit |
| Isotype: | IgG |
| Clonality: | Polyclonal |
| Immunogen: | GPR4 antibody was raised against synthetic 20 amino acid peptide from 3rd cytoplasmic domain of human GPR4. Percent identity with other species by BLAST analysis: Human, Gibbon, Monkey, Dog, Panda, Pig (100%); Bovine, Bat, Rabbit, Zebrafish (95%); Mouse, Rat (85%). |
| Formulation: | PBS, 0.1% sodium azide. |
| Concentration: | lot specific |
| Purification: | Immunoaffinity Chromatography |
| Conjugation: | Unconjugated |
| Storage: | Store at -20°C as received. |
| Stability: | Stable for 12 months from date of receipt. |
| Gene Name: | G protein-coupled receptor 4 |
| Database Link: | NP_005273 Entrez Gene 484440 Dog Entrez Gene 716148 Monkey Entrez Gene 2828 Human P46093 |
| Synonyms: | G protein-coupled receptor 4 |
| Note: | Specific for Human GPR4. BLAST analysis of the peptide immunogen showed no homology with other human proteins. |
| Protein Families: | Druggable Genome, GPCR, Transmembrane |



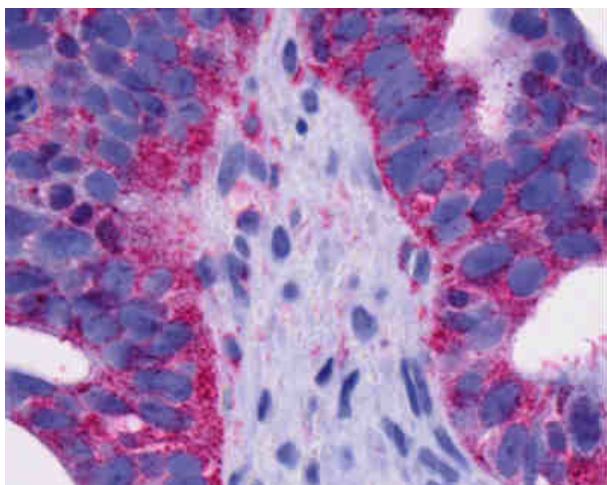
[View online »](#)

Product images:

Anti-GPR4 antibody IHC of human lung, respiratory epithelium. Immunohistochemistry of formalin-fixed, paraffin-embedded tissue after heat-induced antigen retrieval.



Anti-GPR4 antibody IHC of human Lung, Adenocarcinoma. Immunohistochemistry of formalin-fixed, paraffin-embedded tissue after heat-induced antigen retrieval.



Anti-GPR4 antibody IHC of human Ovary, Carcinoma. Immunohistochemistry of formalin-fixed, paraffin-embedded tissue after heat-induced antigen retrieval.