

Product datasheet for **TA317627**

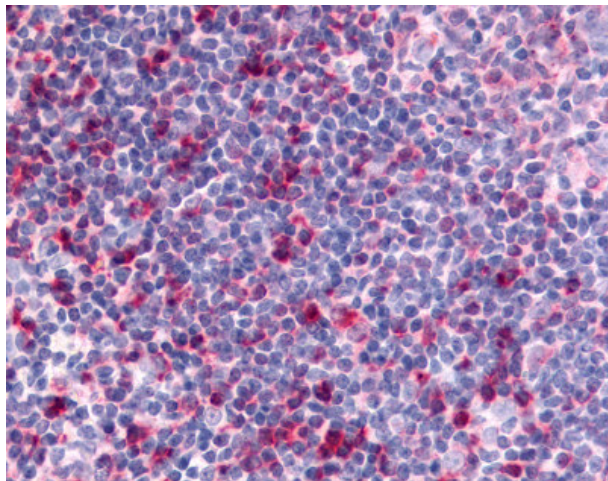
CCR3 Rabbit Polyclonal Antibody

Product data:

Product Type:	Primary Antibodies
Applications:	IHC
Recommended Dilution:	ELISA, IHC-P (10 µg/ml)
Reactivity:	Human
Host:	Rabbit
Isotype:	IgG
Clonality:	Polyclonal
Immunogen:	CCR3 antibody was raised against synthetic 16 amino acid peptide from 3rd extracellular domain of human CCR3. Percent identity with other species by BLAST analysis: Human (100%); Gorilla, Gibbon, Monkey (88%).
Formulation:	PBS, 0.1% sodium azide.
Concentration:	lot specific
Purification:	Immunoaffinity Chromatography
Conjugation:	Unconjugated
Storage:	Store at -20°C as received.
Stability:	Stable for 12 months from date of receipt.
Gene Name:	C-C motif chemokine receptor 3
Database Link:	NP_847899 Entrez Gene 1232 Human P51677
Synonyms:	CC-CKR-3; CD193; CKR3; CMKBR3
Note:	Specific for Human CCR3. BLAST analysis of the peptide immunogen showed no homology with other human proteins.
Protein Families:	Druggable Genome, GPCR, Transmembrane
Protein Pathways:	Chemokine signaling pathway, Cytokine-cytokine receptor interaction



[View online »](#)

Product images:

Anti-CCR3 antibody IHC of human tonsil, lymphocytes. Immunohistochemistry of formalin-fixed, paraffin-embedded tissue after heat-induced antigen retrieval.