

## Product datasheet for **TA317617**

### Metabotropic Glutamate Receptor 7 (GRM7) Rabbit Polyclonal Antibody

#### Product data:

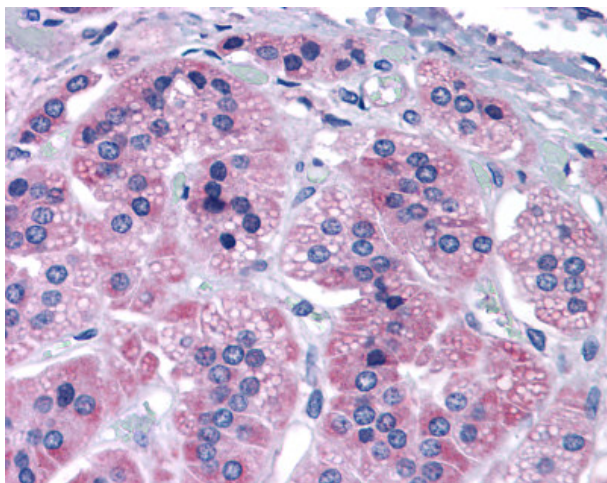
Product Type:	Primary Antibodies
Applications:	IHC
Recommended Dilution:	ICC, IHC-P (6 - 16 µg/ml)
Reactivity:	Bovine, Human (Predicted: Monkey, Mouse, Rat, Dog, Horse)
Host:	Rabbit
Isotype:	IgG
Clonality:	Polyclonal
Immunogen:	GRM7 / MGLUR7 antibody was raised against synthetic 19 amino acid peptide from N-terminal extracellular domain of human GRM7 / MGLUR7. Percent identity with other species by BLAST analysis: Human, Elephant, Bovine (100%); Chimpanzee, Gorilla, Orangutan, Monkey, Marmoset, Mouse, Rat, Dog, Horse (95%); Gibbon, Panda, Rabbit, Opossum (89%); Chicken, Xenopus (84%).
Formulation:	PBS, 0.1% sodium azide.
Concentration:	lot specific
Purification:	Immunoaffinity Chromatography
Conjugation:	Unconjugated
Storage:	Store at -20°C as received.
Stability:	Stable for 12 months from date of receipt.
Gene Name:	glutamate metabotropic receptor 7
Database Link:	<a href="#">NP_000835</a> <a href="#">Entrez Gene 81672 Rat</a> <a href="#">Entrez Gene 108073 Mouse</a> <a href="#">Entrez Gene 484674 Dog</a> <a href="#">Entrez Gene 702731 Monkey</a> <a href="#">Entrez Gene 2917 Human Q14831</a>
Synonyms:	GLUR7; GPRC1G; MGLU7; MGLUR7; PPP1R87
Note:	Specific for Human GRM7 / MGLUR7. BLAST analysis of the peptide immunogen showed no homology with other human proteins, except GRM8 (63%).
Protein Families:	Druggable Genome, GPCR, Transmembrane



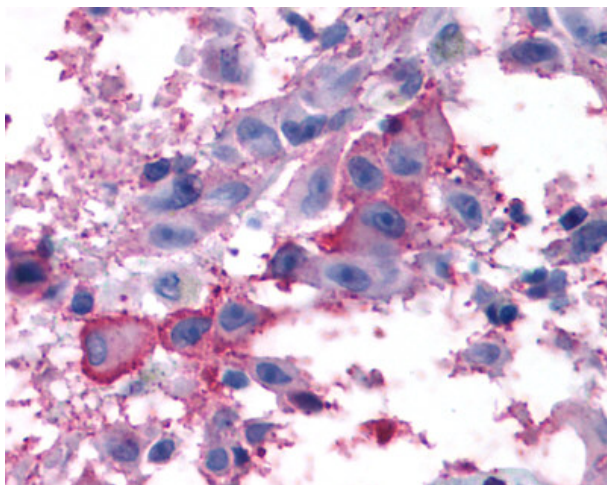
[View online »](#)

Protein Pathways: Neuroactive ligand-receptor interaction

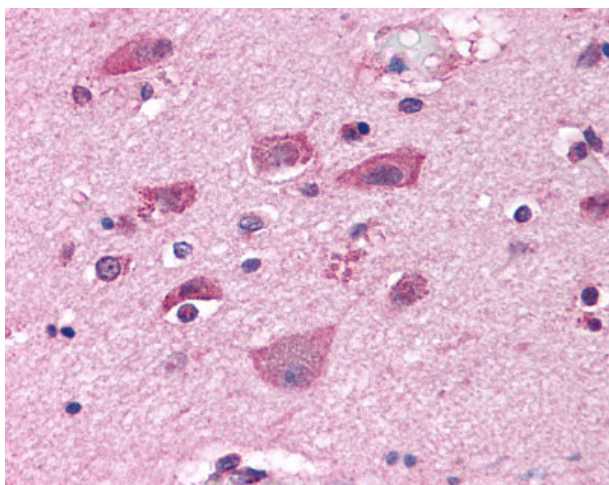
### Product images:



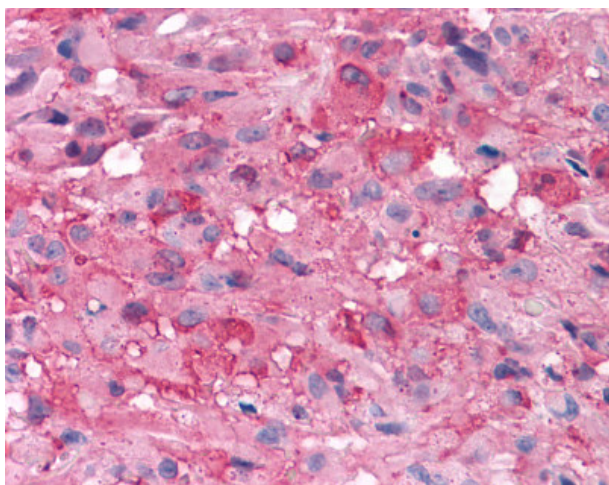
Anti-GRM7 / MGLUR7 antibody IHC of human adrenal. Immunohistochemistry of formalin-fixed, paraffin-embedded tissue after heat-induced antigen retrieval.



Anti-GRM7 / MGLUR7 antibody IHC of human Skin, Melanoma. Immunohistochemistry of formalin-fixed, paraffin-embedded tissue after heat-induced antigen retrieval.



Anti-GRM7 / MGLUR7 antibody IHC of human brain, neurons and glia. Immunohistochemistry of formalin-fixed, paraffin-embedded tissue after heat-induced antigen retrieval.



Anti-GRM7 / MGLUR7 antibody IHC of human Brain, Glioblastoma. Immunohistochemistry of formalin-fixed, paraffin-embedded tissue after heat-induced antigen retrieval.