

## Product datasheet for **TA317615**

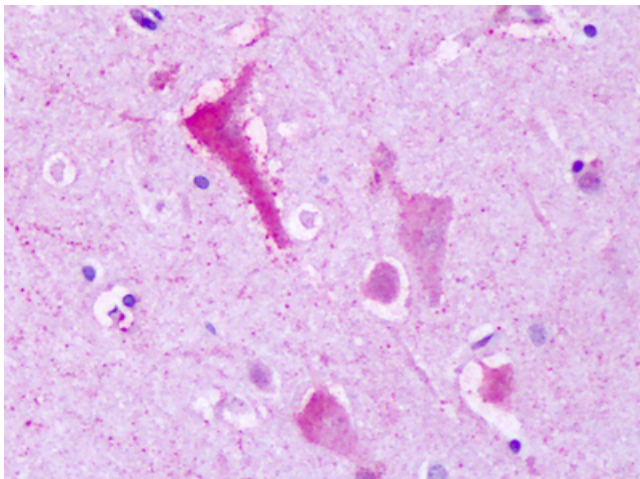
### TM7SF1 (GPR137B) Rabbit Polyclonal Antibody

#### Product data:

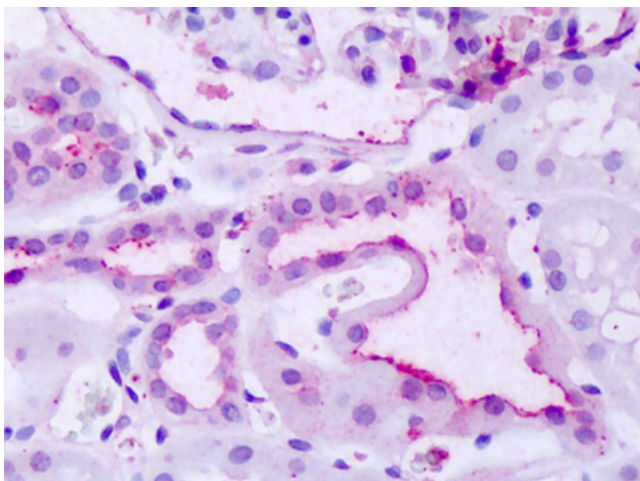
Product Type:	Primary Antibodies
Applications:	IHC
Recommended Dilution:	ICC, IHC-P (5 - 12 µg/ml)
Reactivity:	Human, Monkey, Mouse, Pig, Rabbit, Rat, Gibbon, Horse (Predicted: Bovine, Hamster)
Host:	Rabbit
Isotype:	IgG
Clonality:	Polyclonal
Immunogen:	GPR137B antibody was raised against synthetic 16 amino acid peptide from C-terminus of human GPR137B / TM7SF1. Percent identity with other species by BLAST analysis: Human, Gibbon, Monkey, Marmoset, Mouse, Rat, Panda, Horse, Rabbit, Pig, Opossum (100%); Hamster, Elephant, Bovine (94%); Goat, Chicken, Lizard (88%); Dog, Bat, Turkey (81%).
Formulation:	PBS, 0.1% sodium azide.
Concentration:	lot specific
Purification:	Immunoaffinity Chromatography
Conjugation:	Unconjugated
Storage:	Store at -20°C as received.
Stability:	Stable for 12 months from date of receipt.
Gene Name:	G protein-coupled receptor 137B
Database Link:	<a href="#">NP_003263</a> <a href="#">Entrez Gene 83924 MouseEntrez Gene 289287 RatEntrez Gene 717808 MonkeyEntrez Gene 7107 Human</a> <a href="#">O60478</a>
Synonyms:	TM7SF1
Note:	Specific for Human GPR137B / TM7SF1. BLAST analysis of the peptide immunogen showed no homology with other human proteins.
Protein Families:	Druggable Genome, Transmembrane



[View online »](#)

**Product images:**

Anti-GPR137B antibody IHC of brain, neurons. Immunohistochemistry of formalin-fixed, paraffin-embedded tissue after heat-induced antigen retrieval. Antibody dilution 5-12 ug/ml.



Anti-GPR137B antibody IHC of human kidney. Immunohistochemistry of formalin-fixed, paraffin-embedded tissue after heat-induced antigen retrieval. Antibody dilution 5-12 ug/ml.