

Product datasheet for **TA317611**

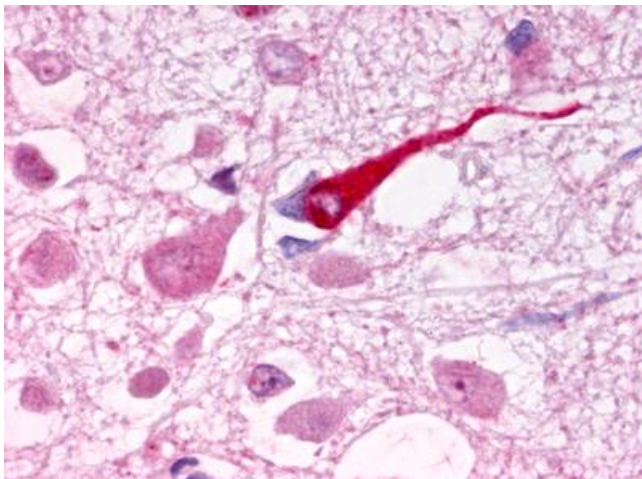
GALR1 Rabbit Polyclonal Antibody

Product data:

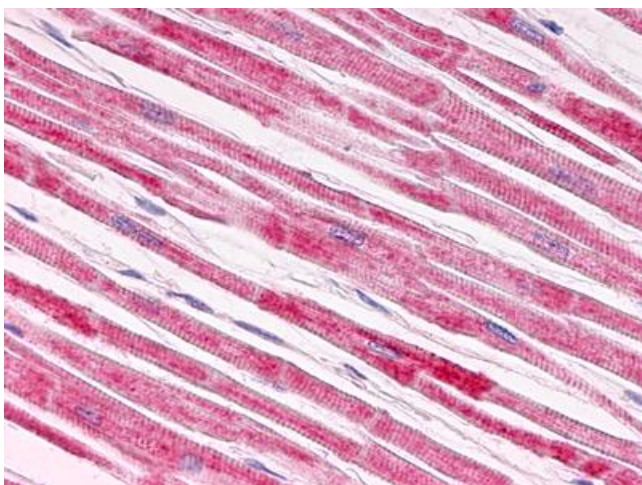
Product Type:	Primary Antibodies
Applications:	IHC
Recommended Dilution:	IHC-P (100 µg/ml)
Reactivity:	Gorilla, Human, Monkey, Gibbon
Host:	Rabbit
Isotype:	IgG
Clonality:	Polyclonal
Immunogen:	GALR1 / Galanin Receptor 1 antibody was raised against synthetic 19 amino acid peptide from 2nd extracellular domain of human GALR1. Percent identity with other species by BLAST analysis: Human, Gorilla, Gibbon, Monkey, Marmoset (100%).
Formulation:	PBS, 0.1% sodium azide.
Concentration:	lot specific
Purification:	Immunoaffinity Chromatography
Conjugation:	Unconjugated
Storage:	Store at -20°C as received.
Stability:	Stable for 12 months from date of receipt.
Gene Name:	galanin receptor 1
Database Link:	NP_001471 Entrez Gene 697450 Monkey Entrez Gene 2587 Human P47211
Synonyms:	GALNR; GALNR1
Note:	Specific for Human GALR1. BLAST analysis of the peptide immunogen showed no homology with other human proteins.
Protein Families:	Druggable Genome, Transmembrane
Protein Pathways:	Neuroactive ligand-receptor interaction



[View online »](#)

Product images:

Anti-Galanin Receptor 1 / GALR1 antibody IHC of human brain, hypothalamus arcuate nucleus. Immunohistochemistry of formalin-fixed, paraffin-embedded tissue after heat-induced antigen retrieval. Antibody dilution 100 ug/ml.



Anti-Galanin Receptor 1 / GALR1 antibody IHC of human heart, myocardium. Immunohistochemistry of formalin-fixed, paraffin-embedded tissue after heat-induced antigen retrieval. Antibody dilution 100 ug/ml.