

## Product datasheet for **TA317596**

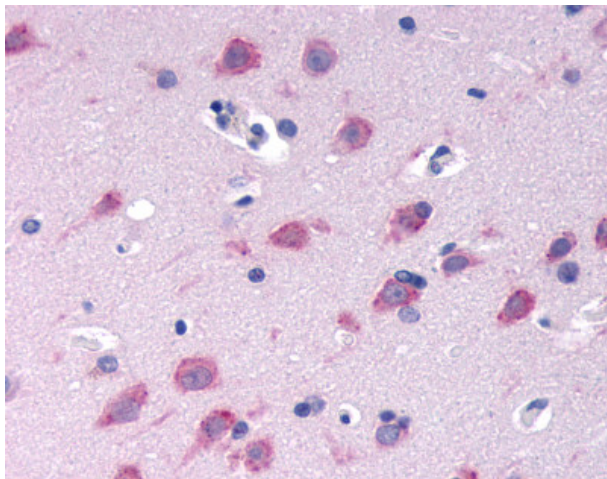
### GPRC6A Rabbit Polyclonal Antibody

#### Product data:

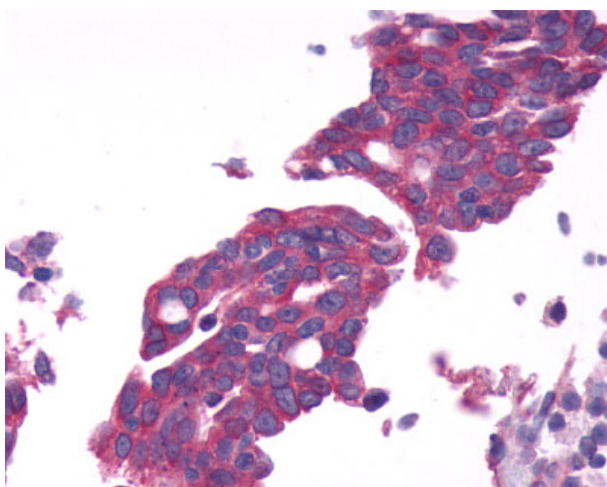
Product Type:	Primary Antibodies
Applications:	IHC
Recommended Dilution:	IHC-P (11 µg/ml)
Reactivity:	Gorilla, Human, Monkey (Predicted: Dog, Horse, Pig, Rabbit)
Host:	Rabbit
Isotype:	IgG
Clonality:	Polyclonal
Immunogen:	GPRC6A antibody was raised against synthetic 17 amino acid peptide from N-terminal extracellular domain of human GPRC6A. Percent identity with other species by BLAST analysis: Human, Gorilla, Monkey, Panda (100%); Dog, Elephant, Rabbit, Horse, Pig (94%); Marmoset, Mouse, Rat, Bovine, Hamster (82%).
Formulation:	PBS, 0.1% sodium azide.
Concentration:	lot specific
Purification:	Immunoaffinity Chromatography
Conjugation:	Unconjugated
Storage:	Store at -20°C as received.
Stability:	Stable for 12 months from date of receipt.
Gene Name:	G protein-coupled receptor class C group 6 member A
Database Link:	<a href="#">NP_683766</a> <a href="#">Entrez Gene 484095 Dog</a> <a href="#">Entrez Gene 715520 Monkey</a> <a href="#">Entrez Gene 222545 Human</a> <a href="#">Q5T6X5</a>
Synonyms:	bA86F4.3; GPCR
Note:	Specific for Human GPRC6A. BLAST analysis of the peptide immunogen showed no homology with other human proteins, except NBPF3 (59%).
Protein Families:	Druggable Genome, Transmembrane



[View online »](#)

**Product images:**

Anti-GPRC6A antibody IHC of human brain, neurons and glia. Immunohistochemistry of formalin-fixed, paraffin-embedded tissue after heat-induced antigen retrieval.



Anti-GPRC6A antibody IHC of human Ovary, Carcinoma. Immunohistochemistry of formalin-fixed, paraffin-embedded tissue after heat-induced antigen retrieval.