

Product datasheet for **TA317579**

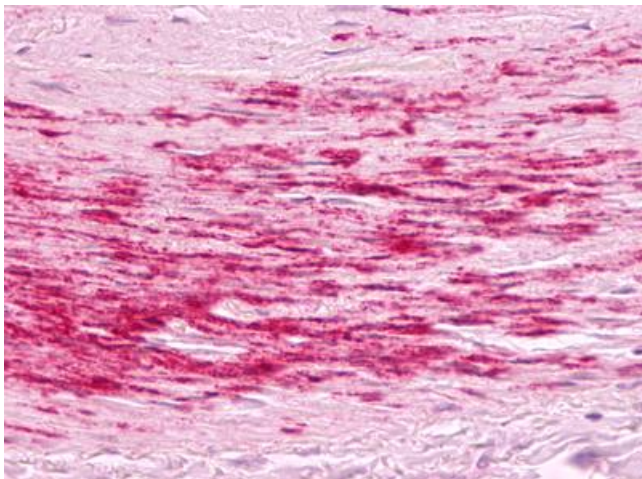
BDKRB1 Rabbit Polyclonal Antibody

Product data:

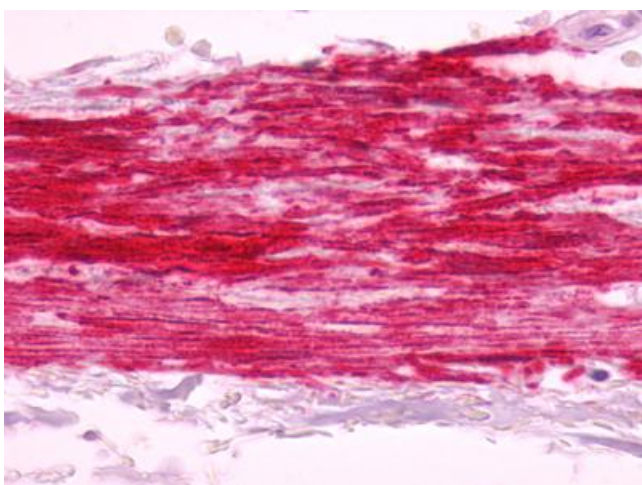
Product Type:	Primary Antibodies
Applications:	IHC
Recommended Dilution:	IHC-P (5 µg/ml)
Reactivity:	Human (Predicted: Monkey)
Host:	Rabbit
Isotype:	IgG
Clonality:	Polyclonal
Immunogen:	B1R / BDKRB1 antibody was raised against synthetic 16 amino acid peptide from 1st cytoplasmic domain of human BDKRB1. Percent identity with other species by BLAST analysis: Human (100%); Gorilla, Gibbon, Monkey (94%); Horse (81%).
Formulation:	PBS, 0.1% sodium azide.
Purification:	Immunoaffinity Chromatography
Conjugation:	Unconjugated
Storage:	Store at -20°C as received.
Stability:	Stable for 12 months from date of receipt.
Gene Name:	bradykinin receptor B1
Database Link:	NP_000701 Entrez Gene 712251 Monkey Entrez Gene 623 Human P46663
Synonyms:	B1BKR; B1R; BDKRB2; BKB1R; BKR1; BRADYB1
Note:	Specific for Human BDKRB1. BLAST analysis of the peptide immunogen showed no homology with other human proteins.
Protein Families:	Druggable Genome, GPCR, Transmembrane
Protein Pathways:	Calcium signaling pathway, Complement and coagulation cascades, Neuroactive ligand-receptor interaction, Regulation of actin cytoskeleton



[View online »](#)

Product images:

Anti-B1R / BDKRB1 antibody IHC of human artery, smooth muscle, atherosclerosis. Immunohistochemistry of formalin-fixed, paraffin-embedded tissue after heat-induced antigen retrieval. Antibody dilution 5 ug/ml.



Anti-B1R / BDKRB1 antibody IHC of human artery, smooth muscle, atherosclerosis. Immunohistochemistry of formalin-fixed, paraffin-embedded tissue after heat-induced antigen retrieval. Antibody dilution 5 ug/ml.