

Product datasheet for **TA317576**

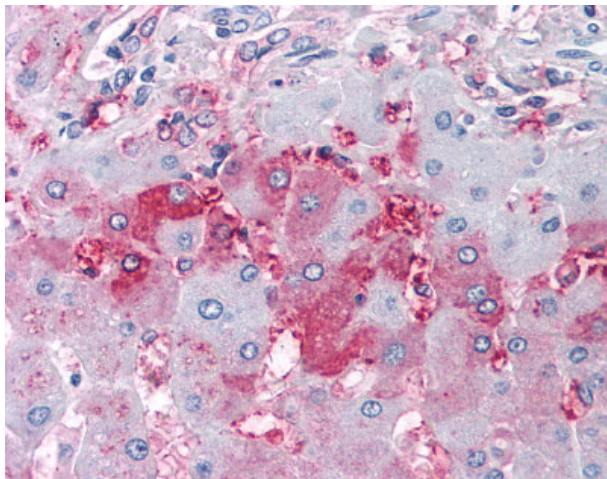
DUSP26 Rabbit Polyclonal Antibody

Product data:

Product Type:	Primary Antibodies
Applications:	IHC
Recommended Dilution:	IHC-P (10 µg/ml)
Reactivity:	Bovine, Gorilla, Human, Monkey, Mouse, Rabbit, Rat, Gibbon, Hamster, Horse, Orang-Utan (Predicted: Bat, Pig)
Host:	Rabbit
Isotype:	IgG
Clonality:	Polyclonal
Immunogen:	MKP-8 / DUSP26 antibody was raised against synthetic 18 amino acid peptide from internal region of human DUSP26. Percent identity with other species by BLAST analysis: Human, Gorilla, Orangutan, Gibbon, Monkey, Marmoset, Mouse, Rat, Bovine, Hamster, Elephant, Panda, Horse, Rabbit, Opossum (100%); Bat, Pig (94%); Platypus (89%).
Formulation:	PBS, 0.1% sodium azide.
Concentration:	lot specific
Purification:	Immunoaffinity Chromatography
Conjugation:	Unconjugated
Storage:	Store at -20°C as received.
Stability:	Stable for 12 months from date of receipt.
Gene Name:	dual specificity phosphatase 26 (putative)
Database Link:	NP_076930 Entrez Gene 66959 MouseEntrez Gene 306527 RatEntrez Gene 697134 MonkeyEntrez Gene 78986 Human Q9BV47
Synonyms:	DSP-4; DUSP24; LDP-4; MKP-8; MKP8; NATA1; NEAP; SKRP3
Note:	Specific for Human DUSP26. BLAST analysis of the peptide immunogen showed no homology with other human proteins, except DUSP27 (61%).
Protein Families:	Druggable Genome, Phosphatase



[View online »](#)

Product images:

Anti-DUSP26 antibody IHC of human liver.
Immunohistochemistry of formalin-fixed,
paraffin-embedded tissue after heat-induced
antigen retrieval.