

## Product datasheet for **TA317575**

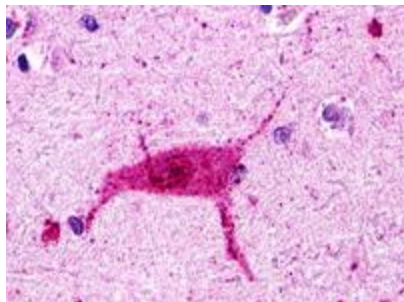
### HRH3 Rabbit Polyclonal Antibody

#### Product data:

Product Type:	Primary Antibodies
Applications:	IHC
Recommended Dilution:	ICC, IHC-P (18 - 36 µg/ml)
Reactivity:	Gorilla, Human, Monkey, Gibbon
Host:	Rabbit
Isotype:	IgG
Clonality:	Polyclonal
Immunogen:	HRH3 / Histamine 3 Receptor antibody was raised against synthetic 16 amino acid peptide from 3rd cytoplasmic domain of human HRH3 / Histamine H3 Receptor. Percent identity with other species by BLAST analysis: Human, Gorilla, Gibbon, Monkey (100%); Mouse, Rat, Hamster, Elephant, Bovine, Dog, Horse, Opossum, Guinea pig, Platypus (88%); Bat, Turkey (81%).
Formulation:	PBS, 0.1% sodium azide.
Concentration:	lot specific
Purification:	Immunoaffinity Chromatography
Conjugation:	Unconjugated
Storage:	Store at -20°C as received.
Stability:	Stable for 12 months from date of receipt.
Gene Name:	histamine receptor H3
Database Link:	<a href="#">NP_009163</a> <a href="#">Entrez Gene 574253 Monkey</a> <a href="#">Entrez Gene 11255 Human</a> <a href="#">Q9Y5N1</a>
Synonyms:	GPCR97; HH3R
Note:	Specific for Human HRH3 / Histamine H3 Receptor. BLAST analysis of the peptide immunogen showed no homology with other human proteins.
Protein Families:	Druggable Genome, Transmembrane
Protein Pathways:	Neuroactive ligand-receptor interaction



[View online »](#)

**Product images:**

Anti-HRH3 / Histamine H3 Receptor antibody IHC of human brain, neurons and glia. Immunohistochemistry of formalin-fixed, paraffin-embedded tissue after heat-induced antigen retrieval.