

## Product datasheet for **TA317573**

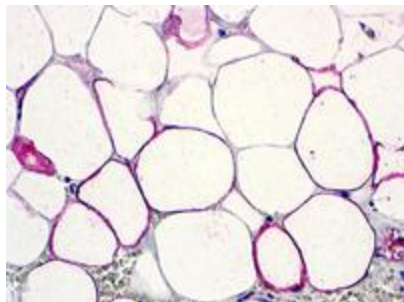
### **C5L2 (C5AR2) Rabbit Polyclonal Antibody**

#### **Product data:**

<b>Product Type:</b>	Primary Antibodies
<b>Applications:</b>	IHC
<b>Recommended Dilution:</b>	IHC-P (25 - 33 µg/ml)
<b>Reactivity:</b>	Gorilla, Human, Monkey, Gibbon
<b>Host:</b>	Rabbit
<b>Isotype:</b>	IgG
<b>Clonality:</b>	Polyclonal
<b>Immunogen:</b>	C5AR2 / GPR77 / C5L2 antibody was raised against synthetic 19 amino acid peptide from 2nd extracellular domain of human C5L2. Percent identity with other species by BLAST analysis: Human, Gorilla, Gibbon, Monkey (100%); Bovine, Pig (89%); Panda (84%).
<b>Formulation:</b>	PBS, 0.1% sodium azide.
<b>Concentration:</b>	lot specific
<b>Purification:</b>	Immunoaffinity Chromatography
<b>Conjugation:</b>	Unconjugated
<b>Storage:</b>	Store at -20°C as received.
<b>Stability:</b>	Stable for 12 months from date of receipt.
<b>Gene Name:</b>	complement component 5a receptor 2
<b>Database Link:</b>	<a href="#">NP_060955</a> <a href="#">Entrez Gene 717209 Monkey</a> <a href="#">Entrez Gene 27202 Human</a> <a href="#">Q9P296</a>
<b>Synonyms:</b>	C5L2; GPF77; GPR77
<b>Note:</b>	Specific for Human C5L2. BLAST analysis of the peptide immunogen showed no homology with other human proteins.
<b>Protein Families:</b>	Druggable Genome, GPCR, Transmembrane



[View online »](#)

**Product images:**

Anti-C5L2 antibody IHC of human adrenal, adipocytes. Immunohistochemistry of formalin-fixed, paraffin-embedded tissue after heat-induced antigen retrieval.