

Product datasheet for **TA317561**

beta 3 Adrenergic Receptor (ADRB3) Rabbit Polyclonal Antibody

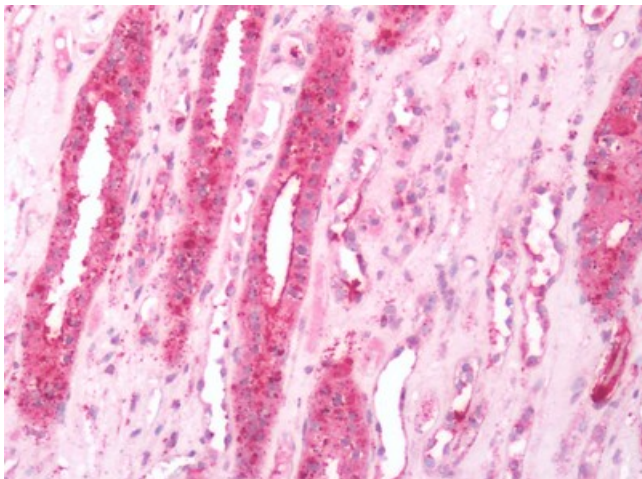
Product data:

Product Type:	Primary Antibodies
Applications:	IHC
Recommended Dilution:	IHC-P (20 - 40 µg/ml)
Reactivity:	Human (Predicted: Monkey)
Host:	Rabbit
Isotype:	IgG
Clonality:	Polyclonal
Immunogen:	ADRB3 antibody was raised against synthetic 18 amino acid peptide from C-terminus of human ADRB3. Percent identity with other species by BLAST analysis: Human (100%); Gorilla, Monkey (94%).
Formulation:	PBS, 0.1% sodium azide.
Concentration:	lot specific
Purification:	Immunoaffinity Chromatography
Conjugation:	Unconjugated
Storage:	Store at -20°C as received.
Stability:	Stable for 12 months from date of receipt.
Gene Name:	adrenoceptor beta 3
Database Link:	NP_000016 Entrez Gene 699129 Monkey Entrez Gene 155 Human P13945
Synonyms:	BETA3AR
Note:	Specific for Human ADRB3. BLAST analysis of the peptide immunogen showed no homology with other human proteins, except OR2G3 (44%).
Protein Families:	Druggable Genome, GPCR, Transmembrane
Protein Pathways:	Calcium signaling pathway, Endocytosis, Neuroactive ligand-receptor interaction

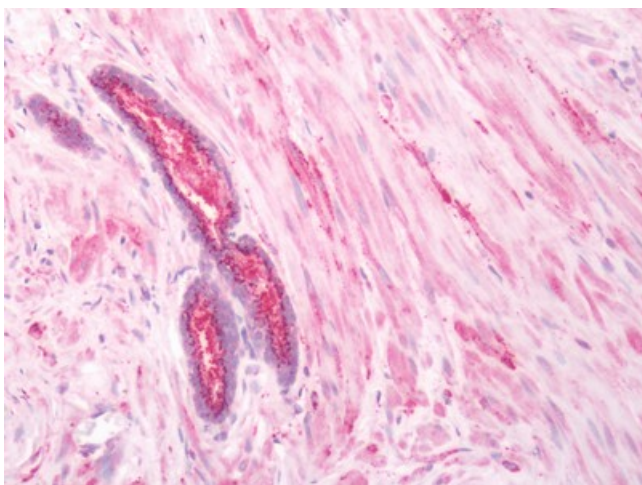


[View online »](#)

Product images:



Human Kidney: Formalin-Fixed, Paraffin-Embedded (FFPE)



Human Prostate: Formalin-Fixed, Paraffin-Embedded (FFPE)