

Product datasheet for **TA317556**

Vasopressin V1b receptor (AVPR1B) Rabbit Polyclonal Antibody

Product data:

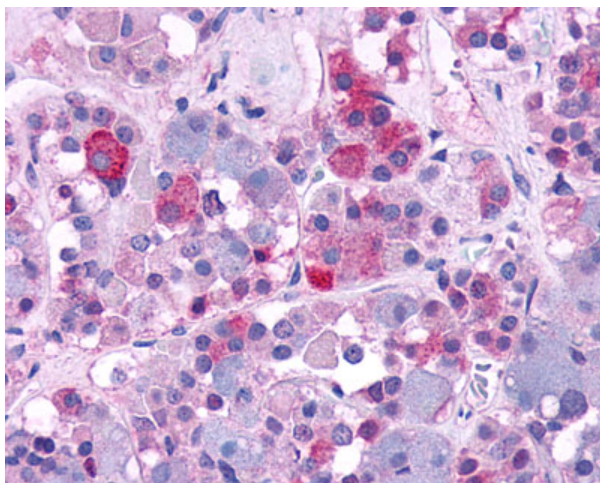
Product Type:	Primary Antibodies
Applications:	IHC
Recommended Dilution:	IHC-P (4 µg/ml)
Reactivity:	Bat, Bovine, Dog, Gorilla, Human, Pig, Rabbit, Rat, Gibbon, Horse (Predicted: Monkey, Mouse)
Host:	Rabbit
Isotype:	IgG
Clonality:	Polyclonal
Immunogen:	AVPR1B antibody was raised against synthetic 17 amino acid peptide from N-terminal extracellular domain of human AVPR1B. Percent identity with other species by BLAST analysis: Human, Gorilla, Gibbon, Monkey, Rat, Bovine, Dog, Bat, Elephant, Panda, Horse, Rabbit, Pig, Opossum (100%); Marmoset, Mouse (94%).
Formulation:	PBS, 0.1% sodium azide.
Concentration:	lot specific
Purification:	Immunoaffinity Chromatography
Conjugation:	Unconjugated
Storage:	Store at -20°C as received.
Stability:	Stable for 12 months from date of receipt.
Gene Name:	arginine vasopressin receptor 1B
Database Link:	NP_000698 Entrez Gene 26361 Mouse Entrez Gene 29462 Rat Entrez Gene 488578 Dog Entrez Gene 695963 Monkey Entrez Gene 553 Human P47901
Synonyms:	AVPR3
Note:	Specific for Human AVPR1B. BLAST analysis of the peptide immunogen showed no homology with other human proteins.
Protein Families:	Druggable Genome, GPCR, Transmembrane



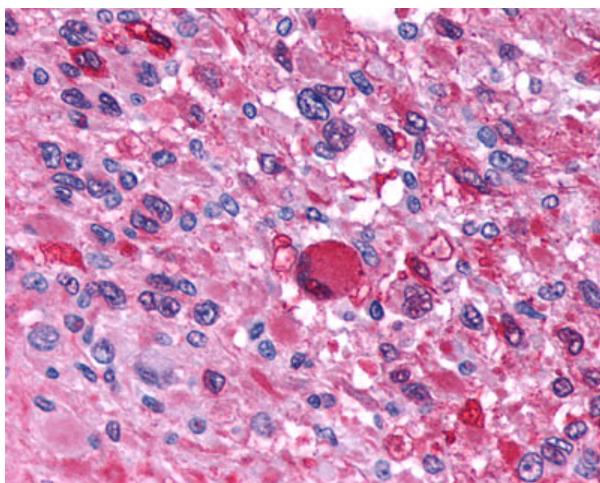
[View online »](#)

Protein Pathways: Calcium signaling pathway, Neuroactive ligand-receptor interaction, Vascular smooth muscle contraction

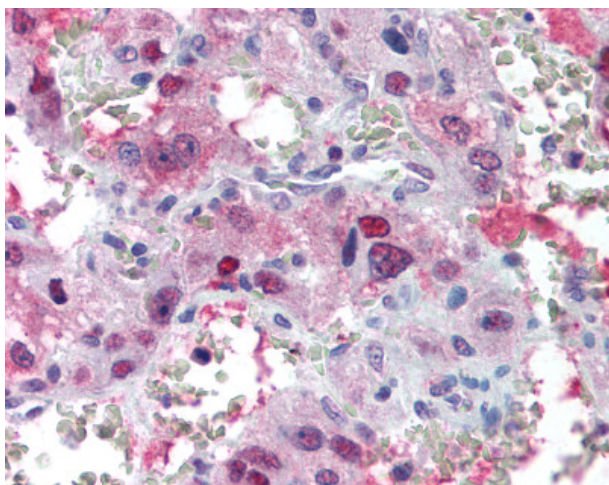
Product images:



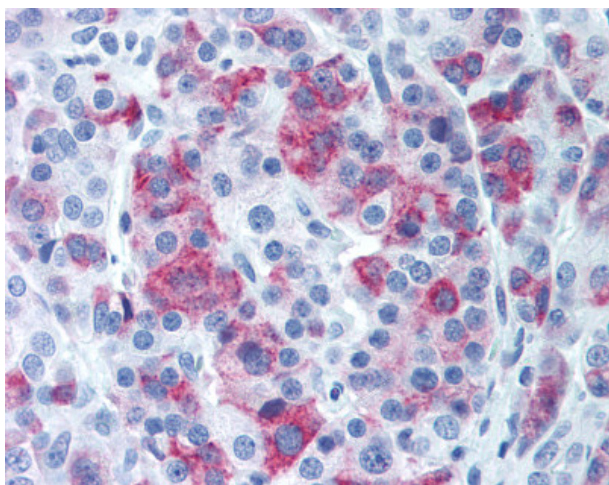
Anti-AVPR1B antibody IHC of human brain, pituitary. Immunohistochemistry of formalin-fixed, paraffin-embedded tissue after heat-induced antigen retrieval.



Anti-AVPR1B antibody IHC of human Brain, Glioblastoma. Immunohistochemistry of formalin-fixed, paraffin-embedded tissue after heat-induced antigen retrieval.



Anti-AVPR1B antibody IHC of human Adrenal, Pheochromocytoma. Immunohistochemistry of formalin-fixed, paraffin-embedded tissue after heat-induced antigen retrieval.



Anti-AVPR1B antibody IHC of human pancreas. Immunohistochemistry of formalin-fixed, paraffin-embedded tissue after heat-induced antigen retrieval.