

Product datasheet for **TA317555**

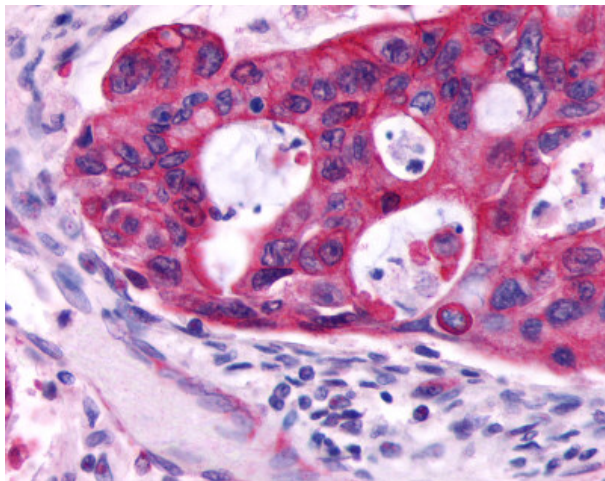
beta 2 Adrenergic Receptor (ADRB2) Rabbit Polyclonal Antibody

Product data:

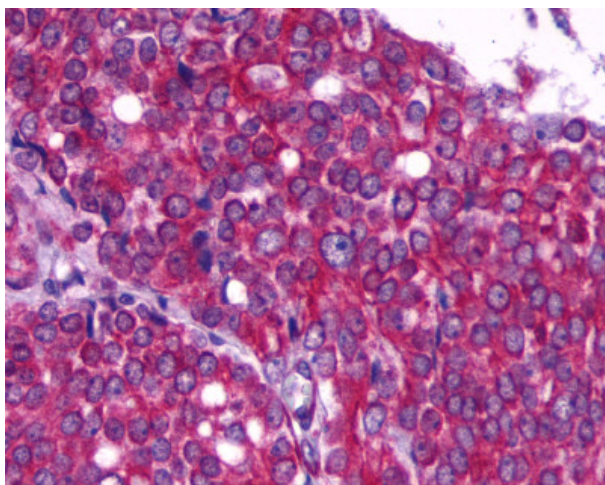
Product Type:	Primary Antibodies
Applications:	IHC
Recommended Dilution:	ICC, IHC-P (5 µg/ml)
Reactivity:	Chimpanzee, Gorilla, Human (Predicted: Monkey)
Host:	Rabbit
Isotype:	IgG
Clonality:	Polyclonal
Immunogen:	ADRB2 antibody was raised against synthetic 18 amino acid peptide from C-terminus of human ADRB2. Percent identity with other species by BLAST analysis: Human, Chimpanzee, Gorilla (100%); Monkey, Marmoset (94%).
Formulation:	PBS, 0.1% sodium azide.
Concentration:	lot specific
Purification:	Immunoaffinity Chromatography
Conjugation:	Unconjugated
Storage:	Store at -20°C as received.
Stability:	Stable for 12 months from date of receipt.
Gene Name:	adrenoceptor beta 2
Database Link:	NP_000015 Entrez Gene 710146 Monkey Entrez Gene 154 Human P07550
Synonyms:	ADRB2R; ADRBR; B2AR; BAR; BETA2AR
Note:	Specific for Human ADRB2. BLAST analysis of the peptide immunogen showed no homology with other human proteins.
Protein Families:	Druggable Genome, GPCR, Transmembrane
Protein Pathways:	Calcium signaling pathway, Endocytosis, Neuroactive ligand-receptor interaction



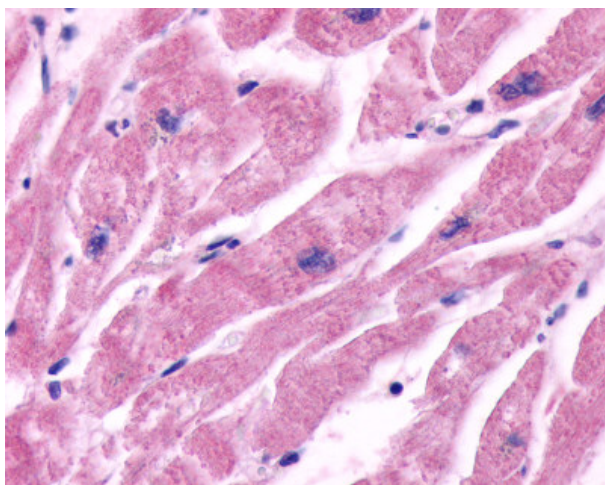
[View online »](#)

Product images:

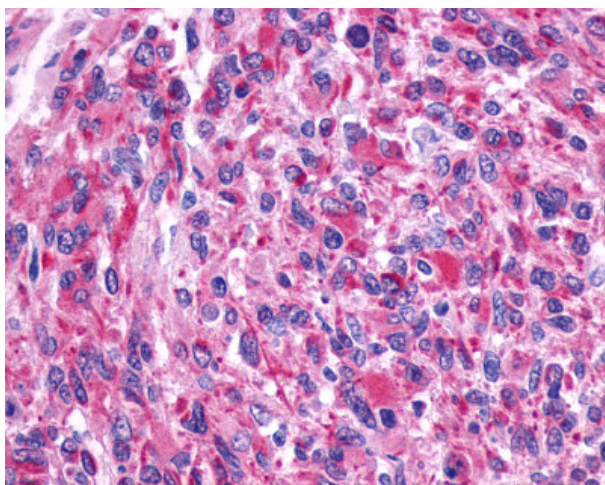
Anti-ADRB2 antibody IHC of human Colon, Carcinoma. Immunohistochemistry of formalin-fixed, paraffin-embedded tissue after heat-induced antigen retrieval.



Anti-ADRB2 antibody IHC of human Prostate, Carcinoma. Immunohistochemistry of formalin-fixed, paraffin-embedded tissue after heat-induced antigen retrieval.



Anti-ADRB2 antibody IHC of human heart, cardiac myocytes. Immunohistochemistry of formalin-fixed, paraffin-embedded tissue after heat-induced antigen retrieval.



Anti-ADRB2 antibody IHC of human Brain, Glioblastoma. Immunohistochemistry of formalin-fixed, paraffin-embedded tissue after heat-induced antigen retrieval.