

Product datasheet for **TA317553**

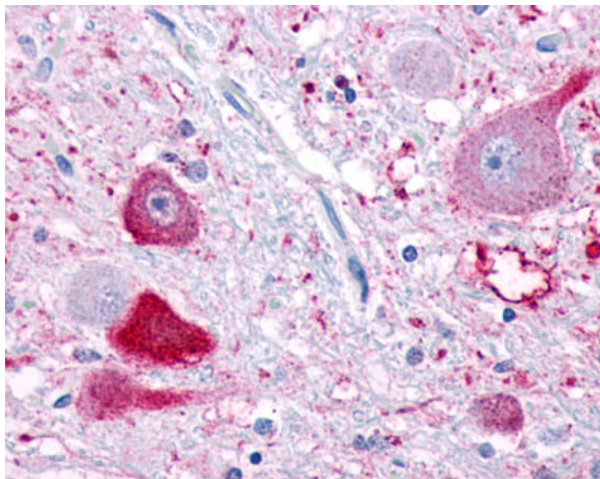
NPFF1 Receptor (NPFFR1) Rabbit Polyclonal Antibody

Product data:

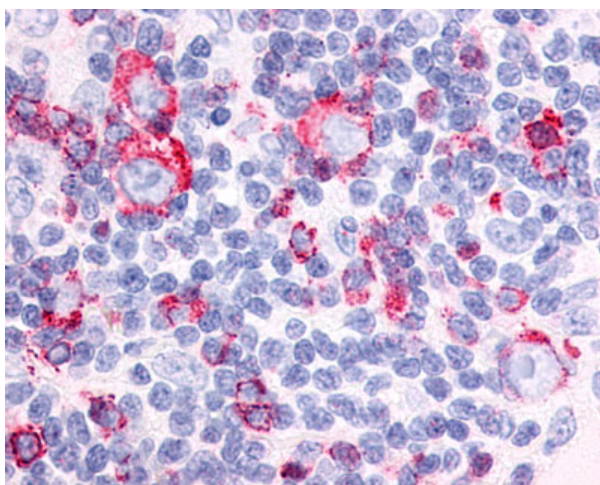
Product Type:	Primary Antibodies
Applications:	IHC
Recommended Dilution:	IHC-P (19 µg/ml)
Reactivity:	Bovine, Gorilla, Human, Monkey, Pig, Rabbit, Gibbon, Horse (Predicted: Mouse, Rat, Dog)
Host:	Rabbit
Isotype:	IgG
Clonality:	Polyclonal
Immunogen:	NPFFR1 / GPR147 antibody was raised against synthetic 20 amino acid peptide from 2nd extracellular domain of human NPFF1 Receptor. Percent identity with other species by BLAST analysis: Human, Gorilla, Gibbon, Monkey, Marmoset, Bovine, Horse, Rabbit, Pig (100%); Mouse, Rat, Dog, Panda (95%); Elephant, Turkey, Chicken (85%); Opossum, Platypus (80%).
Formulation:	PBS, 0.1% sodium azide.
Concentration:	lot specific
Purification:	Immunoaffinity Chromatography
Conjugation:	Unconjugated
Storage:	Store at -20°C as received.
Stability:	Stable for 12 months from date of receipt.
Gene Name:	neuropeptide FF receptor 1
Database Link:	NP_071429 Entrez Gene 64107 RatEntrez Gene 237362 MouseEntrez Gene 609566 DogEntrez Gene 716688 MonkeyEntrez Gene 64106 Human Q9GZQ6
Synonyms:	GPR147; NPFF1; NPFF1R1; OT7T022
Note:	Specific for Human NPFF1 Receptor. BLAST analysis of the peptide immunogen showed no homology with other human proteins.
Protein Families:	Druggable Genome, Transmembrane
Protein Pathways:	Neuroactive ligand-receptor interaction



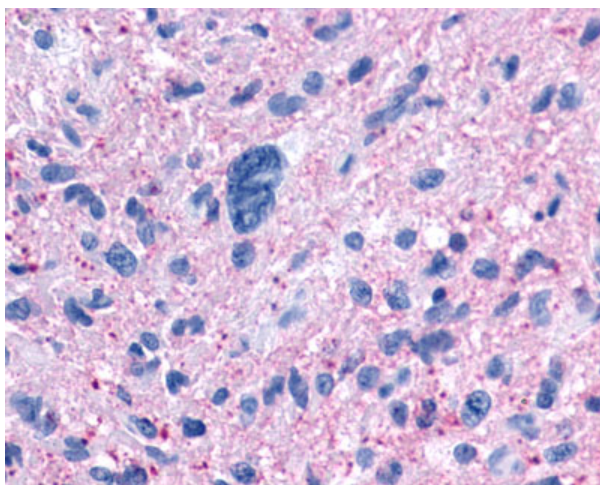
[View online »](#)

Product images:

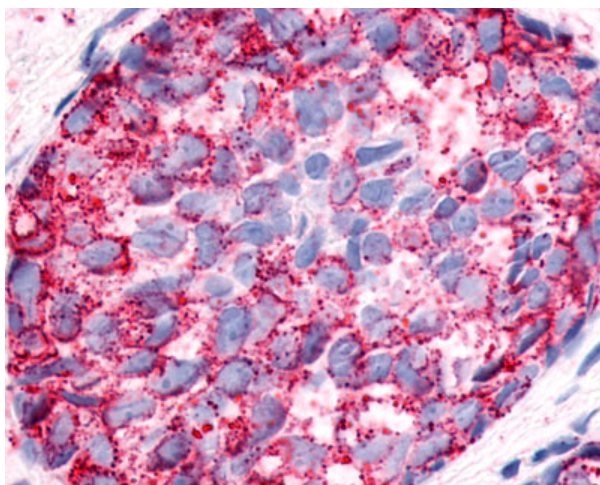
Anti-NPFF1 Receptor antibody IHC of human brain, neurons. Immunohistochemistry of formalin-fixed, paraffin-embedded tissue after heat-induced antigen retrieval.



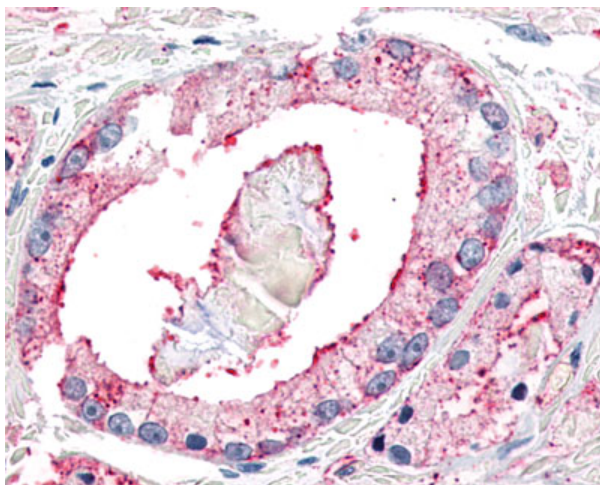
Anti-NPFFR1 / GPR147 antibody IHC of human Lymph Node, Hodgkins Lymphoma. Immunohistochemistry of formalin-fixed, paraffin-embedded tissue after heat-induced antigen retrieval.



Anti-NPFFR1 / GPR147 antibody IHC of human Brain, Glioblastoma. Immunohistochemistry of formalin-fixed, paraffin-embedded tissue after heat-induced antigen retrieval.



Anti-NPFFR1 / GPR147 antibody IHC of human Breast, Carcinoma. Immunohistochemistry of formalin-fixed, paraffin-embedded tissue after heat-induced antigen retrieval.



Anti-NPFFR1 / GPR147 antibody IHC of human Prostate, Carcinoma. Immunohistochemistry of formalin-fixed, paraffin-embedded tissue after heat-induced antigen retrieval.