

Product datasheet for **TA317552**

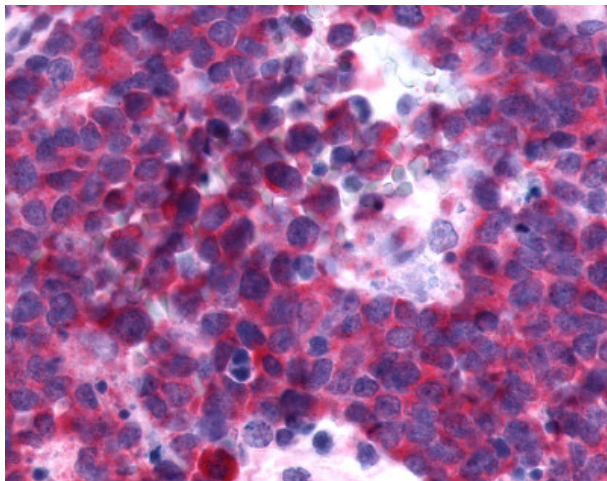
GPR86 (P2RY13) Rabbit Polyclonal Antibody

Product data:

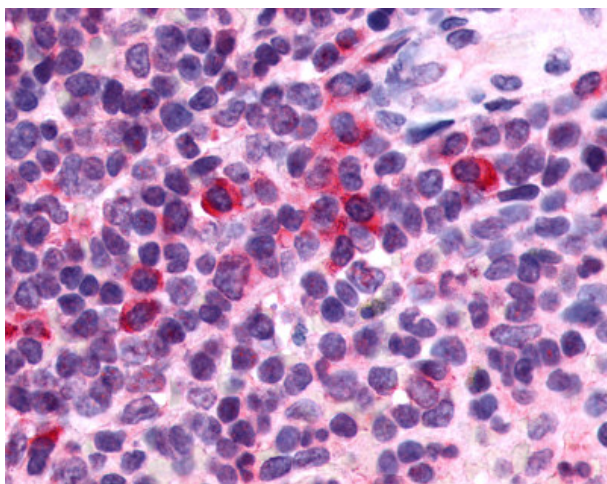
Product Type:	Primary Antibodies
Applications:	IHC
Recommended Dilution:	IHC-P (20 - 40 µg/ml)
Reactivity:	Gorilla, Human, Gibbon (Predicted: Monkey, Bat, Bovine)
Host:	Rabbit
Isotype:	IgG
Clonality:	Polyclonal
Immunogen:	P2Y13 / P2RY13 antibody was raised against synthetic 16 amino acid peptide from 3rd cytoplasmic domain of human P2RY13 / P2Y13. Percent identity with other species by BLAST analysis: Human, Gorilla, Gibbon, Monkey (100%); Marmoset, Bovine, Bat (94%); Dog, Pig (81%).
Formulation:	PBS, 0.1% sodium azide.
Concentration:	lot specific
Purification:	Immunoaffinity Chromatography
Conjugation:	Unconjugated
Storage:	Store at -20°C as received.
Stability:	Stable for 12 months from date of receipt.
Gene Name:	purinergic receptor P2Y13
Database Link:	NP_795713 Entrez Gene 106997046 Monkey Entrez Gene 53829 Human Q9BPV8
Synonyms:	FKSG77; GPCR1; GPR86; GPR94; P2Y13; SP174
Note:	Specific for Human P2RY13 / P2Y13. BLAST analysis of the peptide immunogen showed no homology with other human proteins, except PRPF4B (50%).
Protein Families:	Druggable Genome, GPCR, Transmembrane
Protein Pathways:	Neuroactive ligand-receptor interaction



[View online »](#)

Product images:

Anti-P2Y13 / P2RY13 antibody IHC of human Lymph Node, Non-Hodgkins Lymphoma. Immunohistochemistry of formalin-fixed, paraffin-embedded tissue after heat-induced antigen retrieval.



Anti-P2RY13 / P2Y13 antibody IHC of human spleen. Immunohistochemistry of formalin-fixed, paraffin-embedded tissue after heat-induced antigen retrieval.