

Product datasheet for **TA317550**

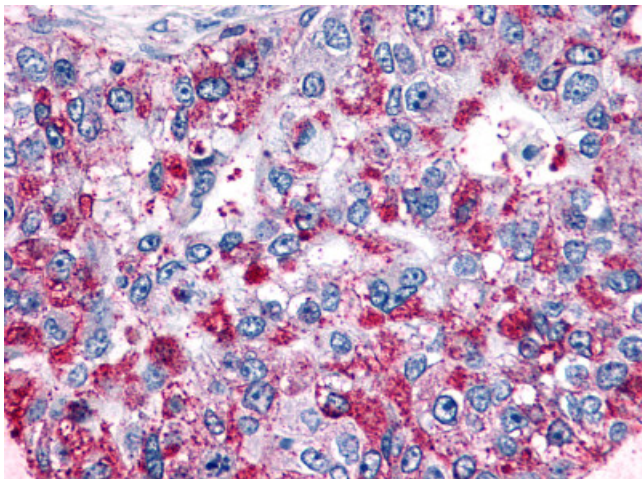
GPR4 Rabbit Polyclonal Antibody

Product data:

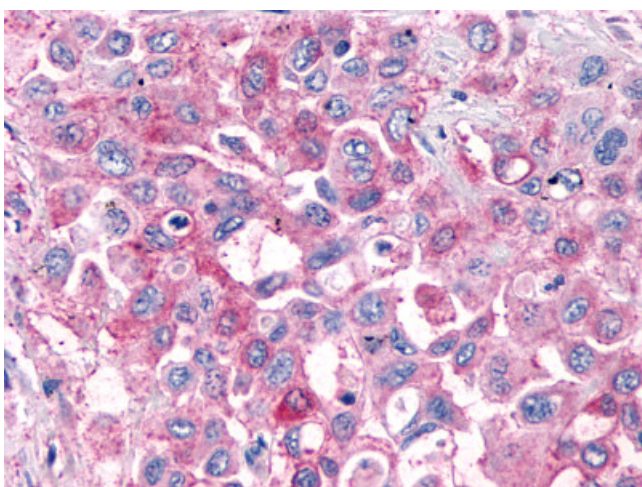
Product Type:	Primary Antibodies
Applications:	IHC
Recommended Dilution:	ICC, IHC-P (24 µg/ml)
Reactivity:	Dog, Gorilla, Human, Monkey, Gibbon (Predicted: Mouse, Rat, Bat, Bovine, Pig)
Host:	Rabbit
Isotype:	IgG
Clonality:	Polyclonal
Immunogen:	GPR4 antibody was raised against synthetic 19 amino acid peptide from C-terminus of human GPR4. Percent identity with other species by BLAST analysis: Human, Gorilla, Gibbon, Monkey, Dog, Panda (100%); Mouse, Rat, Bovine, Bat, Pig (95%); Rabbit (89%).
Formulation:	PBS, 0.1% sodium azide.
Concentration:	lot specific
Purification:	Immunoaffinity Chromatography
Conjugation:	Unconjugated
Storage:	Store at -20°C as received.
Stability:	Stable for 12 months from date of receipt.
Gene Name:	G protein-coupled receptor 4
Database Link:	NP_005273 Entrez Gene 308408 RatEntrez Gene 319197 MouseEntrez Gene 484440 DogEntrez Gene 716148 MonkeyEntrez Gene 2828 Human P46093
Synonyms:	G protein-coupled receptor 4
Note:	Specific for Human GPR4. BLAST analysis of the peptide immunogen showed no homology with other human proteins.
Protein Families:	Druggable Genome, GPCR, Transmembrane



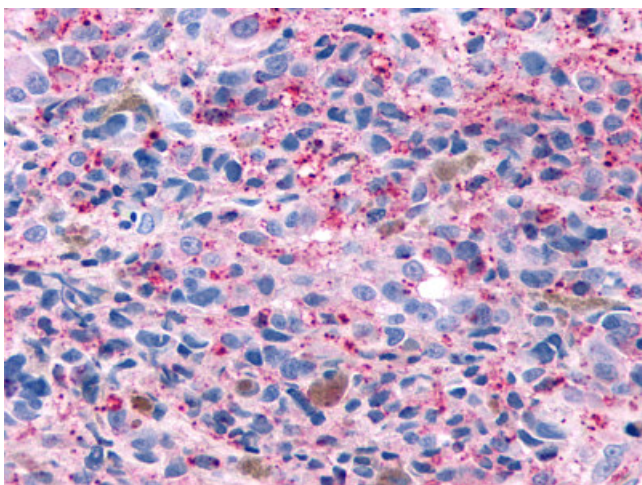
[View online »](#)

Product images:

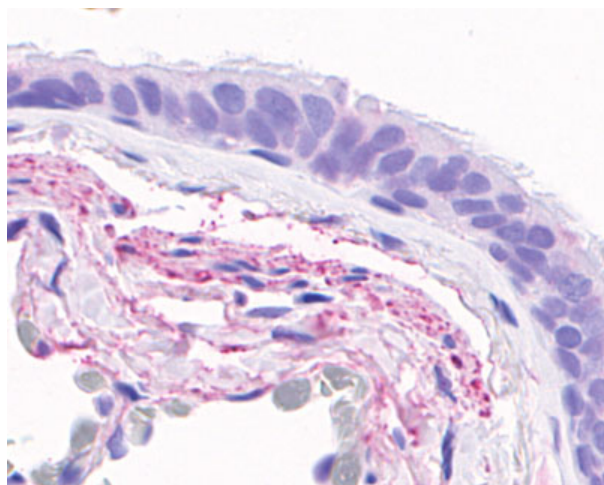
Anti-GPR4 antibody IHC of human Lung, Adenocarcinoma. Immunohistochemistry of formalin-fixed, paraffin-embedded tissue after heat-induced antigen retrieval.



Anti-GPR4 antibody IHC of human Pancreas, Carcinoma. Immunohistochemistry of formalin-fixed, paraffin-embedded tissue after heat-induced antigen retrieval.



Anti-GPR4 antibody IHC of human Skin, Melanoma. Immunohistochemistry of formalin-fixed, paraffin-embedded tissue after heat-induced antigen retrieval.



Anti-GPR4 antibody IHC of human lung, respiratory epithelium. Immunohistochemistry of formalin-fixed, paraffin-embedded tissue after heat-induced antigen retrieval.