

## Product datasheet for **TA317549**

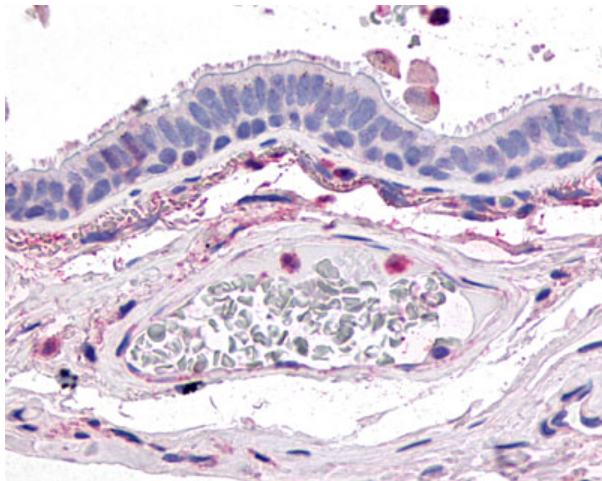
### GPR4 Rabbit Polyclonal Antibody

#### Product data:

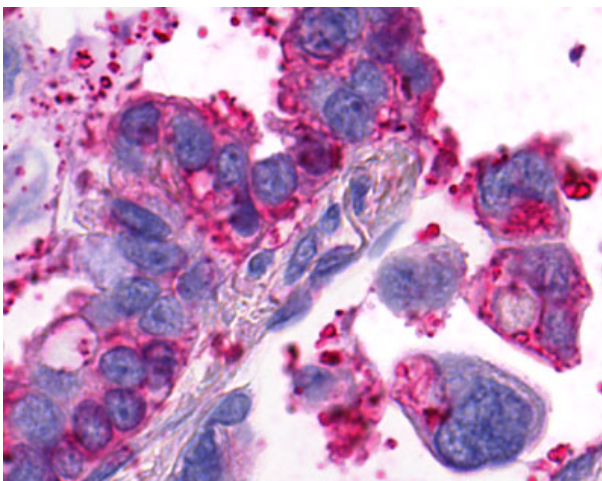
Product Type:	Primary Antibodies
Applications:	IHC
Recommended Dilution:	IHC-P (8 - 16 µg/ml)
Reactivity:	Bat, Bovine, Dog, Human, Monkey, Mouse, Pig, Rabbit, Rat, Gibbon
Host:	Rabbit
Isotype:	IgG
Clonality:	Polyclonal
Immunogen:	GPR4 antibody was raised against synthetic 20 amino acid peptide from 2nd extracellular domain of human GPR4. Percent identity with other species by BLAST analysis: Human, Gibbon, Monkey, Mouse, Rat, Dog, Bat, Bovine, Panda, Rabbit, Pig (100%); Zebrafish (85%); Pufferfish, Stickleback (80%).
Formulation:	PBS, 0.1% sodium azide.
Concentration:	lot specific
Purification:	Immunoaffinity Chromatography
Conjugation:	Unconjugated
Storage:	Store at -20°C as received.
Stability:	Stable for 12 months from date of receipt.
Gene Name:	G protein-coupled receptor 4
Database Link:	<a href="#">NP_005273</a> <a href="#">Entrez Gene 308408</a> <a href="#">RatEntrez Gene 319197</a> <a href="#">MouseEntrez Gene 484440</a> <a href="#">DogEntrez Gene 716148</a> <a href="#">MonkeyEntrez Gene 2828</a> <a href="#">Human P46093</a>
Synonyms:	G protein-coupled receptor 4
Note:	Specific for Human GPR4. BLAST analysis of the peptide immunogen showed no homology with other human proteins.
Protein Families:	Druggable Genome, GPCR, Transmembrane



[View online »](#)

**Product images:**

Anti-GPR4 antibody IHC of human lung, respiratory epithelium. Immunohistochemistry of formalin-fixed, paraffin-embedded tissue after heat-induced antigen retrieval.



Anti-GPR4 antibody IHC of human Lung, Adenocarcinoma. Immunohistochemistry of formalin-fixed, paraffin-embedded tissue after heat-induced antigen retrieval.