

## Product datasheet for **TA317547**

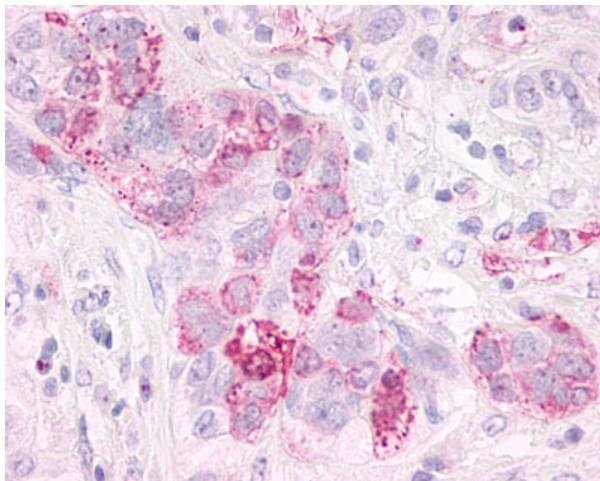
### GPR3 Rabbit Polyclonal Antibody

#### Product data:

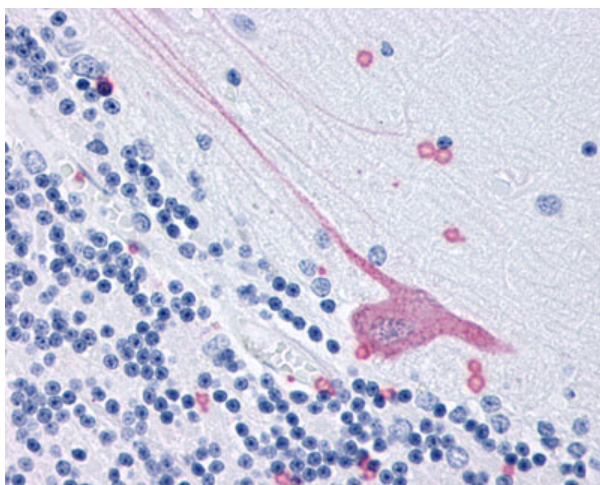
Product Type:	Primary Antibodies
Applications:	IHC
Recommended Dilution:	IHC-P (6 µg/ml)
Reactivity:	Gorilla, Human, Pig (Predicted: Monkey, Bovine, Horse)
Host:	Rabbit
Isotype:	IgG
Clonality:	Polyclonal
Immunogen:	GPR3 antibody was raised against synthetic 15 amino acid peptide from 1st extracellular domain of human GPR3. Percent identity with other species by BLAST analysis: Human, Gorilla, Marmoset, Panda, Pig (100%); Gibbon, Monkey, Bovine, Elephant, Horse (93%); Mouse, Rat, Rabbit (87%).
Formulation:	PBS, 0.1% sodium azide.
Concentration:	lot specific
Purification:	Immunoaffinity Chromatography
Conjugation:	Unconjugated
Storage:	Store at -20°C as received.
Stability:	Stable for 12 months from date of receipt.
Gene Name:	G protein-coupled receptor 3
Database Link:	<a href="#">NP_005272</a> <a href="#">Entrez Gene 716033 Monkey</a> <a href="#">Entrez Gene 2827 Human</a> <a href="#">P46089</a>
Synonyms:	ACCA
Note:	Specific for Human GPR3. BLAST analysis of the peptide immunogen showed no homology with other human proteins, except SPPL2A (60%).
Protein Families:	Druggable Genome, GPCR, Transmembrane



[View online »](#)

**Product images:**

Anti-GPR3 antibody IHC of human Ovary, Carcinoma. Immunohistochemistry of formalin-fixed, paraffin-embedded tissue after heat-induced antigen retrieval.



Anti-GPR3 antibody IHC of human brain. Immunohistochemistry of formalin-fixed, paraffin-embedded tissue after heat-induced antigen retrieval.