

Product datasheet for **TA317533**

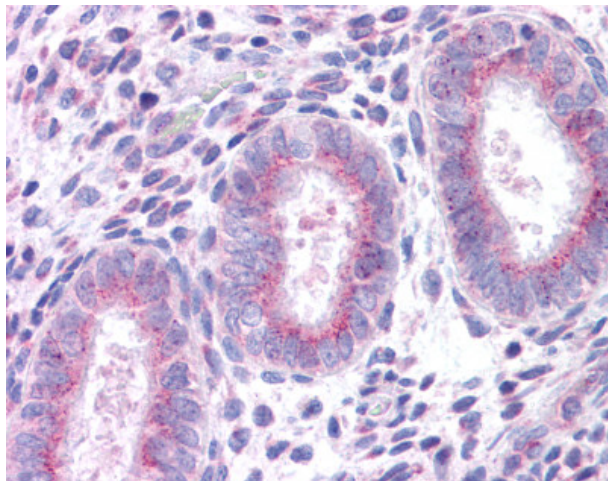
CCXCR1 (XCR1) Rabbit Polyclonal Antibody

Product data:

Product Type:	Primary Antibodies
Applications:	IHC
Recommended Dilution:	IHC-P (5 - 10 µg/ml)
Reactivity:	Human (Predicted: Monkey)
Host:	Rabbit
Isotype:	IgG
Clonality:	Polyclonal
Immunogen:	XCR1 antibody was raised against synthetic 20 amino acid peptide from C-terminal cytoplasmic domain of human XCR1. Percent identity with other species by BLAST analysis: Human (100%); Gorilla, Gibbon (95%); Monkey (90%).
Formulation:	PBS, 0.1% sodium azide.
Concentration:	lot specific
Purification:	Immunoaffinity Chromatography
Conjugation:	Unconjugated
Storage:	Store at -20°C as received.
Stability:	Stable for 12 months from date of receipt.
Gene Name:	X-C motif chemokine receptor 1
Database Link:	NP_005274 Entrez Gene 713622 Monkey Entrez Gene 2829 Human P46094
Synonyms:	CCXCR1; GPR5
Note:	Specific for Human XCR1. BLAST analysis of the peptide immunogen showed no homology with other human proteins.
Protein Families:	Druggable Genome, GPCR, Transmembrane
Protein Pathways:	Chemokine signaling pathway, Cytokine-cytokine receptor interaction



[View online »](#)

Product images:

Anti-XCR1 antibody IHC of human uterus.
Immunohistochemistry of formalin-fixed,
paraffin-embedded tissue after heat-induced
antigen retrieval.