

Product datasheet for **TA317524**

WNT8A Rabbit Polyclonal Antibody

Product data:

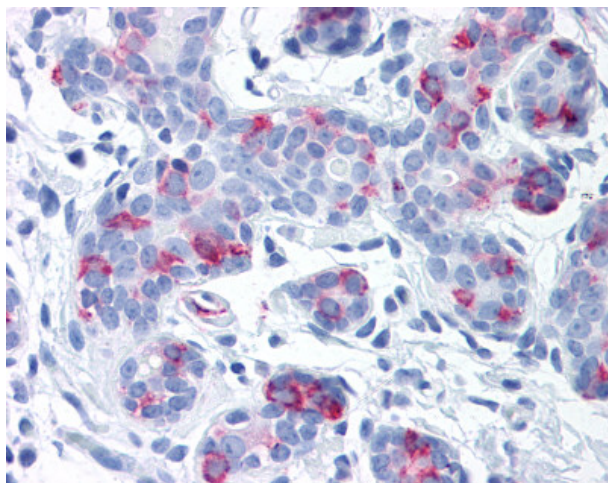
Product Type:	Primary Antibodies
Applications:	IHC
Recommended Dilution:	IHC-P (10 - 20 µg/ml)
Reactivity:	Bat, Gorilla, Human, Monkey, Gibbon, Horse (Predicted: Bovine, Dog)
Host:	Rabbit
Isotype:	IgG
Clonality:	Polyclonal
Immunogen:	WNT8A antibody was raised against synthetic 14 amino acid peptide from internal region of human WNT8A. Percent identity with other species by BLAST analysis: Human, Gorilla, Gibbon, Monkey, Marmoset, Bat, Elephant, Panda, Horse (100%); Bovine, Dog (93%); Rabbit (86%).
Formulation:	PBS, 0.1% sodium azide.
Concentration:	lot specific
Purification:	Immunoaffinity Chromatography
Conjugation:	Unconjugated
Storage:	Store at -20°C as received.
Stability:	Stable for 12 months from date of receipt.
Gene Name:	Wnt family member 8A
Database Link:	NP_490645 Entrez Gene 100855884 Dog Entrez Gene 713764 Monkey Entrez Gene 7478 Human Q9H1J5
Synonyms:	WNT8D
Note:	Specific for Human WNT8A. BLAST analysis of the peptide immunogen showed no homology with other human proteins.
Protein Families:	Cancer stem cells, ES Cell Differentiation/IPS, Induced pluripotent stem cells, Secreted Protein, Stem cell relevant signaling - Wnt Signaling pathway



[View online »](#)

Protein Pathways: Basal cell carcinoma, Hedgehog signaling pathway, Melanogenesis, Pathways in cancer, Wnt signaling pathway

Product images:



Anti-WNT8A antibody IHC of human breast. Immunohistochemistry of formalin-fixed, paraffin-embedded tissue after heat-induced antigen retrieval.