

Product datasheet for **TA317522**

WNT7A Rabbit Polyclonal Antibody

Product data:

Product Type:	Primary Antibodies
Applications:	IHC
Recommended Dilution:	IHC-P (20 µg/ml)
Reactivity:	Bat, Bovine, Chimpanzee, Chicken, Dog, Xenopus, Gorilla, Human, Monkey, Mouse, Pig, Rabbit, Rat, Gibbon, Hamster, Horse, Orang-Utan, Guinea Pig
Host:	Rabbit
Isotype:	IgG
Clonality:	Polyclonal
Immunogen:	WNT7A antibody was raised against synthetic 12 amino acid peptide from internal region of human WNT7A. Percent identity with other species by BLAST analysis: Human, Chimpanzee, Gorilla, Orangutan, Gibbon, Monkey, Galago, Marmoset, Mouse, Rat, Hamster, Elephant, Panda, Bovine, Dog, Bat, Horse, Rabbit, Pig, Guinea pig, Turkey, Zebra finch, Chicken, Platypus, Lizard, Xenopus (100%); Seabass (92%); Stickleback, Pufferfish, Zebrafish (83%).
Formulation:	PBS, 0.1% sodium azide.
Concentration:	lot specific
Purification:	Immunoaffinity Chromatography
Conjugation:	Unconjugated
Storage:	Store at -20°C as received.
Stability:	Stable for 12 months from date of receipt.
Gene Name:	Wnt family member 7A
Database Link:	NP_004616 Entrez Gene 22421 Mouse Entrez Gene 114850 Rat Entrez Gene 607180 Dog Entrez Gene 693419 Monkey Entrez Gene 7476 Human O00755
Synonyms:	A1849442; OTTMUSP00000024971; postaxial hemimelia; px; tw; wingless-related MMTV integration site 7A; Wnt-7a
Note:	Specific for Human WNT7A. BLAST analysis of the peptide immunogen showed no homology with other human proteins.

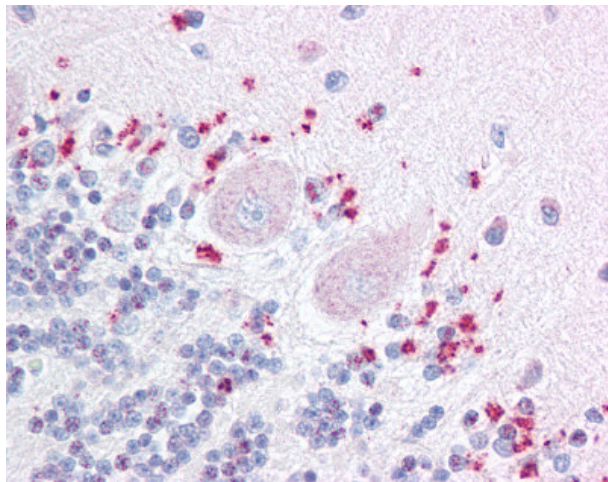


[View online »](#)

Protein Families: Druggable Genome, Secreted Protein, Transmembrane

Protein Pathways: Basal cell carcinoma, Hedgehog signaling pathway, Melanogenesis, Pathways in cancer, Wnt signaling pathway

Product images:



Anti-WNT7A antibody IHC of human brain, cerebellum. Immunohistochemistry of formalin-fixed, paraffin-embedded tissue after heat-induced antigen retrieval.