

Product datasheet for **TA317519**

WNT6 Rabbit Polyclonal Antibody

Product data:

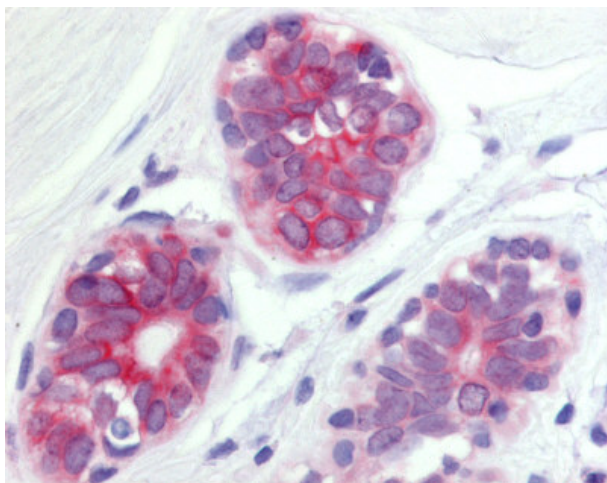
Product Type:	Primary Antibodies
Applications:	IHC
Recommended Dilution:	IHC-P (20 µg/ml)
Reactivity:	Bat, Bovine, Dog, Gorilla, Human, Rabbit, Gibbon, Horse (Predicted: Monkey, Mouse, Rat, Hamster)
Host:	Rabbit
Isotype:	IgG
Clonality:	Polyclonal
Immunogen:	WNT6 antibody was raised against synthetic 18 amino acid peptide from internal region of human WNT6. Percent identity with other species by BLAST analysis: Human, Gorilla, Gibbon, Monkey, Elephant, Bovine, Dog, Bat, Horse, Rabbit, Opossum (100%); Marmoset, Mouse, Rat, Hamster, Platypus (94%); Turkey, Chicken (83%).
Formulation:	PBS, 0.1% sodium azide.
Concentration:	lot specific
Purification:	Immunoaffinity Chromatography
Conjugation:	Unconjugated
Storage:	Store at -20°C as received.
Stability:	Stable for 12 months from date of receipt.
Gene Name:	Wnt family member 6
Database Link:	NP_006513 Entrez Gene 22420 MouseEntrez Gene 316526 RatEntrez Gene 488527 DogEntrez Gene 700573 MonkeyEntrez Gene 7475 Human Q9Y6F9
Synonyms:	member 6; wingless-type MMTV integration site family
Note:	Specific for Human WNT6. BLAST analysis of the peptide immunogen showed no homology with other human proteins.
Protein Families:	Adult stem cells, Cancer stem cells, ES Cell Differentiation/IPS, Secreted Protein, Stem cell relevant signaling - Wnt Signaling pathway, Transmembrane



[View online »](#)

Protein Pathways: Basal cell carcinoma, Hedgehog signaling pathway, Melanogenesis, Pathways in cancer, Wnt signaling pathway

Product images:



Anti-WNT6 antibody IHC of human breast, epithelium cells. Immunohistochemistry of formalin-fixed, paraffin-embedded tissue after heat-induced antigen retrieval.