

Product datasheet for **TA317518**

WNT2B Rabbit Polyclonal Antibody

Product data:

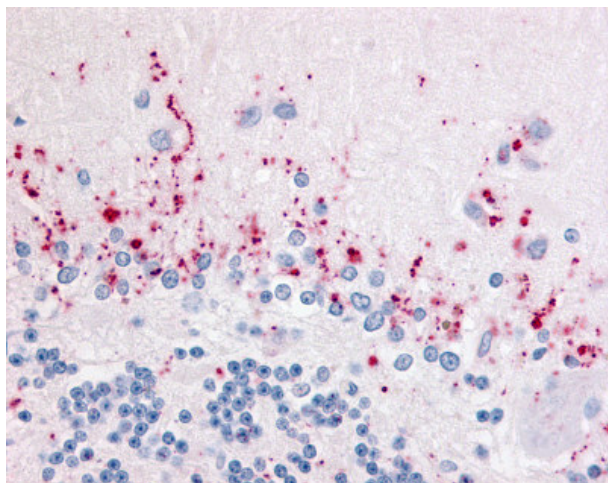
Product Type:	Primary Antibodies
Applications:	IHC
Recommended Dilution:	IHC-P (5 µg/ml)
Reactivity:	Bat, Bovine, Dog, Gorilla, Human, Monkey, Mouse, Pig, Rabbit, Rat, Gibbon, Hamster, Horse
Host:	Rabbit
Isotype:	IgG
Clonality:	Polyclonal
Immunogen:	WNT2B antibody was raised against synthetic 16 amino acid peptide from internal region of human WNT2B. Percent identity with other species by BLAST analysis: Human, Gorilla, Gibbon, Monkey, Marmoset, Mouse, Rat, Bovine, Dog, Bat, Hamster, Panda, Horse, Rabbit, Pig (100%); Elephant (94%); Opossum, Platypus (88%).
Formulation:	PBS, 0.1% sodium azide.
Concentration:	lot specific
Purification:	Immunoaffinity Chromatography
Conjugation:	Unconjugated
Storage:	Store at -20°C as received.
Stability:	Stable for 12 months from date of receipt.
Gene Name:	Wnt family member 2B
Database Link:	NP_004176 Entrez Gene 22414 Mouse Entrez Gene 116466 Rat Entrez Gene 483220 Dog Entrez Gene 705773 Monkey Entrez Gene 7482 Human Q93097
Synonyms:	WNT13
Note:	Specific for Human WNT2B. BLAST analysis of the peptide immunogen showed no homology with other human proteins, except GALNT6 (56%).
Protein Families:	Secreted Protein



[View online »](#)

Protein Pathways: Basal cell carcinoma, Hedgehog signaling pathway, Melanogenesis, Pathways in cancer, Wnt signaling pathway

Product images:



Anti-WNT2B antibody IHC of human brain, cerebellum. Immunohistochemistry of formalin-fixed, paraffin-embedded tissue after heat-induced antigen retrieval.