

Product datasheet for **TA317516**

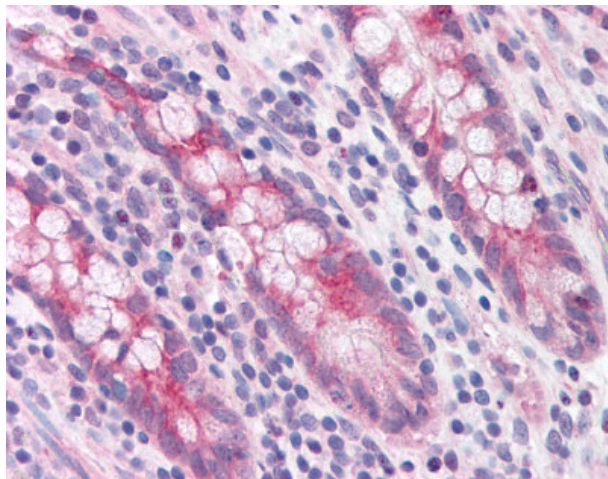
CCN6 Rabbit Polyclonal Antibody

Product data:

Product Type:	Primary Antibodies
Applications:	IHC
Recommended Dilution:	ELISA (1:000 - 1:1000), IHC-P (10 µg/ml)
Reactivity:	Human
Host:	Rabbit
Isotype:	IgG
Clonality:	Polyclonal
Immunogen:	WISP3 / PPD antibody was raised against synthetic peptide from human WISP3.
Formulation:	PBS, 0.1% sodium azide.
Concentration:	lot specific
Purification:	Protein G Column
Conjugation:	Unconjugated
Storage:	Store at -20°C as received.
Stability:	Stable for 12 months from date of receipt.
Gene Name:	WNT1 inducible signaling pathway protein 3
Database Link:	NP_003871 Entrez Gene 8838 Human O95389
Synonyms:	CCN6; LIBC; PPAC; PPD; WISP-3
Note:	Specific for Amino acids 320 to 335 of human WISP3
Protein Families:	Druggable Genome, ES Cell Differentiation/IPS, Secreted Protein



[View online »](#)

Product images:

Anti-WISP3 antibody IHC of human small intestine. Immunohistochemistry of formalin-fixed, paraffin-embedded tissue after heat-induced antigen retrieval. Antibody concentration 10 ug/ml.