

Product datasheet for **TA317515**

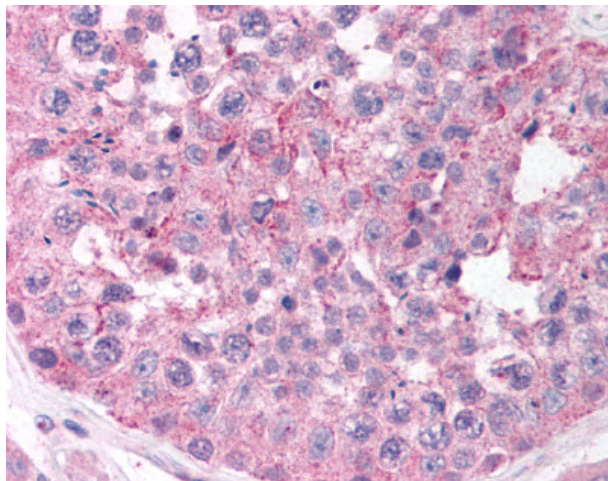
CCN5 Rabbit Polyclonal Antibody

Product data:

Product Type:	Primary Antibodies
Applications:	IHC
Recommended Dilution:	ELISA (1:000 - 1:1000), IHC-P (10 µg/ml)
Reactivity:	Human
Host:	Rabbit
Isotype:	IgG
Clonality:	Polyclonal
Immunogen:	WISP2 antibody was raised against synthetic peptide from human WISP2.
Formulation:	PBS, 0.1% sodium azide.
Concentration:	lot specific
Purification:	Protein G Column
Conjugation:	Unconjugated
Storage:	Store at -20°C as received.
Stability:	Stable for 12 months from date of receipt.
Gene Name:	WNT1 inducible signaling pathway protein 2
Database Link:	NP_003872 Entrez Gene 8839 Human O76076
Synonyms:	CCN5; CT58; CTGF-L
Note:	Specific for Amino acids 102 to 117 of human WISP2
Protein Families:	Druggable Genome, ES Cell Differentiation/IPS, Secreted Protein



[View online »](#)

Product images:

Anti-WISP2 antibody IHC of human testis. Immunohistochemistry of formalin-fixed, paraffin-embedded tissue after heat-induced antigen retrieval. Antibody concentration 10 ug/ml.