

## Product datasheet for **TA317488**

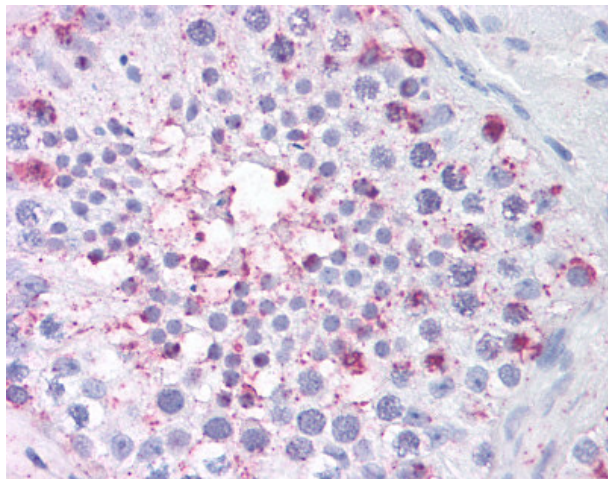
### USP2 Rabbit Polyclonal Antibody

#### Product data:

Product Type:	Primary Antibodies
Applications:	IHC
Recommended Dilution:	IHC-P (1.25 - 2.5 µg/ml)
Reactivity:	Gorilla, Human, Monkey, Gibbon (Predicted: Dog, Horse, Pig, Rabbit)
Host:	Rabbit
Isotype:	IgG
Clonality:	Polyclonal
Immunogen:	USP2 antibody was raised against synthetic 18 amino acid peptide from internal region of human USP2. Percent identity with other species by BLAST analysis: Human, Gorilla, Gibbon, Monkey (100%); Dog, Panda, Horse, Rabbit, Pig (94%); Marmoset, Mouse, Rat, Bovine, Hamster, Elephant (89%); Opossum (83%).
Formulation:	PBS, 0.1% sodium azide.
Concentration:	lot specific
Purification:	Immunoaffinity Chromatography
Conjugation:	Unconjugated
Storage:	Store at -20°C as received.
Stability:	Stable for 12 months from date of receipt.
Gene Name:	ubiquitin specific peptidase 2
Database Link:	<a href="#">NP_741994</a> <a href="#">Entrez Gene 608188 Dog</a> <a href="#">Entrez Gene 705191 Monkey</a> <a href="#">Entrez Gene 9099 Human</a> <a href="#">O75604</a>
Synonyms:	UBP41; USP9
Note:	Specific for Human USP2. BLAST analysis of the peptide immunogen showed no homology with other human proteins.
Protein Families:	Protease



[View online »](#)

**Product images:**

Anti-USP2 antibody IHC of human testis.  
Immunohistochemistry of formalin-fixed,  
paraffin-embedded tissue after heat-induced  
antigen retrieval.