

Product datasheet for **TA317473**

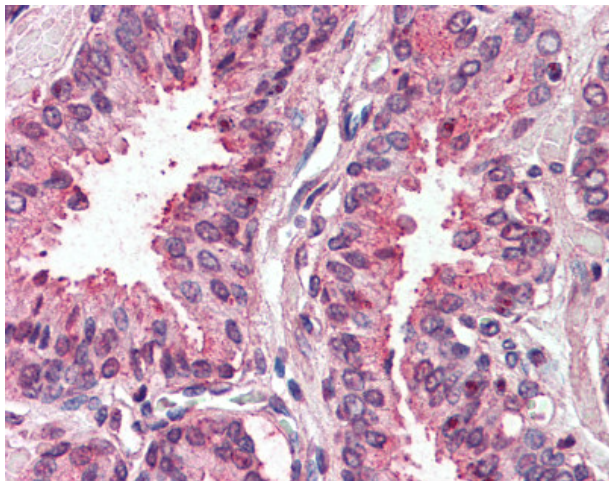
TSPAN6 Rabbit Polyclonal Antibody

Product data:

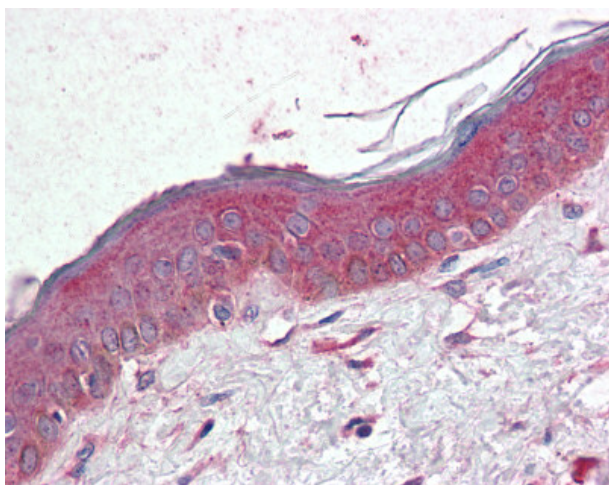
Product Type:	Primary Antibodies
Applications:	IHC
Recommended Dilution:	IHC-P (10 µg/ml)
Reactivity:	Chimpanzee, Gorilla, Human, Orang-Utan (Predicted: Bovine, Horse)
Host:	Rabbit
Isotype:	IgG
Clonality:	Polyclonal
Immunogen:	TM4SF6 / TSPAN6 antibody was raised against synthetic 18 amino acid peptide from internal region of human TSPAN6. Percent identity with other species by BLAST analysis: Human, Chimpanzee, Gorilla, Orangutan (100%); Gibbon, Bovine, Horse (94%); Monkey, Galago, Marmoset, Bat, Dog, Pig (89%); Mouse, Rat, Hamster, Guinea pig (83%).
Formulation:	PBS, 0.1% sodium azide.
Concentration:	lot specific
Purification:	Immunoaffinity Chromatography
Conjugation:	Unconjugated
Storage:	Store at -20°C as received.
Stability:	Stable for 12 months from date of receipt.
Gene Name:	tetraspanin 6
Database Link:	NP_003261 Entrez Gene 7105 Human O43657
Synonyms:	T245; TM4SF6; TSPAN-6
Note:	Specific for Human TSPAN6. BLAST analysis of the peptide immunogen showed no homology with other human proteins.
Protein Families:	Transmembrane



[View online »](#)

Product images:

Anti-TSPAN6 antibody IHC of human, prostate. Immunohistochemistry of formalin-fixed, paraffin-embedded tissue after heat-induced antigen retrieval.



Anti-TSPAN6 antibody IHC of human, skin. Immunohistochemistry of formalin-fixed, paraffin-embedded tissue after heat-induced antigen retrieval.