

Product datasheet for **TA317471**

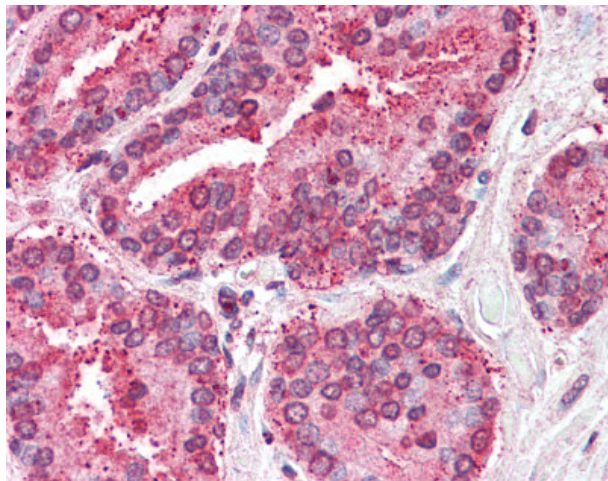
TSPAN6 Rabbit Polyclonal Antibody

Product data:

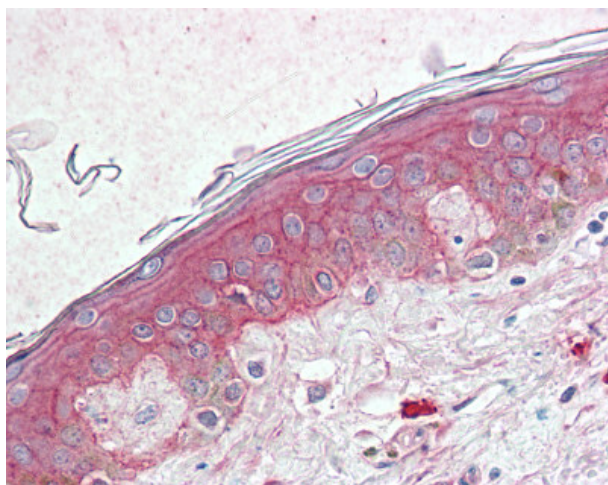
Product Type:	Primary Antibodies
Applications:	IHC
Recommended Dilution:	IHC-P (10 µg/ml)
Reactivity:	Gorilla, Human, Monkey, Rabbit, Gibbon, Orang-Utan (Predicted: Horse, Pig)
Host:	Rabbit
Isotype:	IgG
Clonality:	Polyclonal
Immunogen:	TM4SF6 / TSPAN6 antibody was raised against synthetic 19 amino acid peptide from internal region of human TSPAN6. Percent identity with other species by BLAST analysis: Human, Gorilla, Orangutan, Gibbon, Monkey, Marmoset, Rabbit (100%); Elephant, Panda, Horse, Pig (95%); Bovine, Bat (89%); Mouse, Rat, Hamster (84%).
Formulation:	PBS, 0.1% sodium azide.
Concentration:	lot specific
Purification:	Immunoaffinity Chromatography
Conjugation:	Unconjugated
Storage:	Store at -20°C as received.
Stability:	Stable for 12 months from date of receipt.
Gene Name:	tetraspanin 6
Database Link:	NP_003261 Entrez Gene 703166 Monkey Entrez Gene 7105 Human O43657
Synonyms:	T245; TM4SF6; TSPAN-6
Note:	Specific for Human TSPAN6. BLAST analysis of the peptide immunogen showed no homology with other human proteins.
Protein Families:	Transmembrane



[View online »](#)

Product images:

Anti-TSPAN6 antibody IHC of human prostate. Immunohistochemistry of formalin-fixed, paraffin-embedded tissue after heat-induced antigen retrieval.



Anti-TSPAN6 antibody IHC of human skin. Immunohistochemistry of formalin-fixed, paraffin-embedded tissue after heat-induced antigen retrieval.