

Product datasheet for **TA317470**

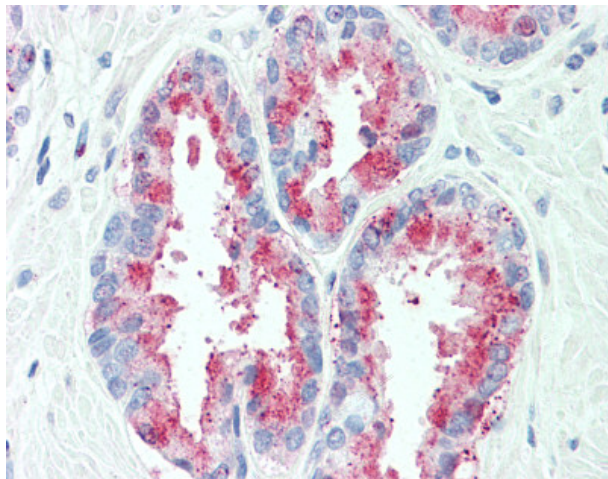
Tspan 13 (TSPAN13) Rabbit Polyclonal Antibody

Product data:

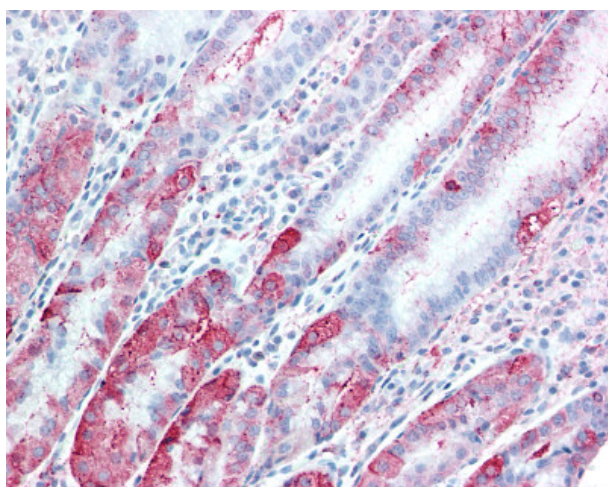
Product Type:	Primary Antibodies
Applications:	IHC
Recommended Dilution:	IHC-P (5 µg/ml)
Reactivity:	Chimpanzee, Gorilla, Human, Monkey, Mouse, Rat, Gibbon, Horse (Predicted: Dog, Rabbit)
Host:	Rabbit
Isotype:	IgG
Clonality:	Polyclonal
Immunogen:	TSPAN13 / TM4SF13 antibody was raised against synthetic 13 amino acid peptide from internal region of human TSPAN13. Percent identity with other species by BLAST analysis: Human, Chimpanzee, Gorilla, Gibbon, Monkey, Galago, Marmoset, Mouse, Rat, Horse (100%); Orangutan, Elephant, Panda, Dog, Rabbit, Opossum, Platypus (92%); Bat, Bovine, Pig, Guinea pig, Pufferfish, Zebrafish (85%).
Formulation:	PBS, 0.1% sodium azide.
Concentration:	lot specific
Purification:	Immunoaffinity Chromatography
Conjugation:	Unconjugated
Storage:	Store at -20°C as received.
Stability:	Stable for 12 months from date of receipt.
Gene Name:	tetraspanin 13
Database Link:	NP_055214 Entrez Gene 66109 MouseEntrez Gene 366602 RatEntrez Gene 482332 DogEntrez Gene 714570 MonkeyEntrez Gene 27075 Human O95857
Synonyms:	NET-6; NET6; TM4SF13
Note:	Specific for Human TSPAN13. BLAST analysis of the peptide immunogen showed no homology with other human proteins.
Protein Families:	Druggable Genome, Transmembrane



[View online »](#)

Product images:

Anti-TSPAN13 antibody IHC of human, prostate. Immunohistochemistry of formalin-fixed, paraffin-embedded tissue after heat-induced antigen retrieval.



Anti-TSPAN13 antibody IHC of human, stomach. Immunohistochemistry of formalin-fixed, paraffin-embedded tissue after heat-induced antigen retrieval.