

## Product datasheet for **TA317469**

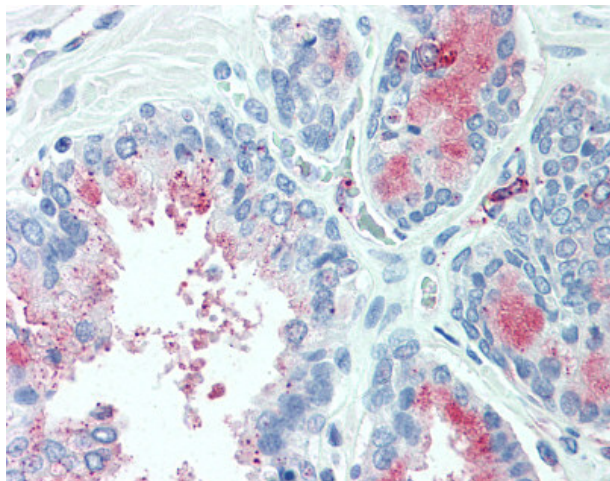
### Tspan 13 (TSPAN13) Rabbit Polyclonal Antibody

#### Product data:

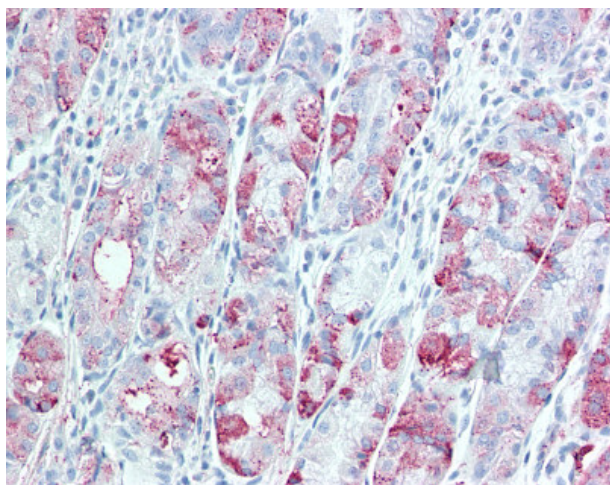
Product Type:	Primary Antibodies
Applications:	IHC
Recommended Dilution:	IHC-P (10 µg/ml)
Reactivity:	Dog, Gorilla, Human, Monkey, Mouse, Rabbit, Rat, Gibbon, Horse (Predicted: Bat, Bovine, Hamster)
Host:	Rabbit
Isotype:	IgG
Clonality:	Polyclonal
Immunogen:	TSPAN13 / TM4SF13 antibody was raised against synthetic 13 amino acid peptide from internal region of human TSPAN13. Percent identity with other species by BLAST analysis: Human, Gorilla, Gibbon, Monkey, Marmoset, Mouse, Rat, Dog, Elephant, Panda, Horse, Rabbit (100%); Bat, Bovine, Hamster, Opossum, Platypus (92%).
Formulation:	PBS, 0.1% sodium azide.
Concentration:	lot specific
Purification:	Immunoaffinity Chromatography
Conjugation:	Unconjugated
Storage:	Store at -20°C as received.
Stability:	Stable for 12 months from date of receipt.
Gene Name:	tetraspanin 13
Database Link:	<a href="#">NP_055214</a> <a href="#">Entrez Gene 66109</a> <a href="#">MouseEntrez Gene 366602</a> <a href="#">RatEntrez Gene 482332</a> <a href="#">DogEntrez Gene 714570</a> <a href="#">MonkeyEntrez Gene 27075</a> <a href="#">Human O95857</a>
Synonyms:	NET-6; NET6; TM4SF13
Note:	Specific for Human TSPAN13. BLAST analysis of the peptide immunogen showed no homology with other human proteins.
Protein Families:	Druggable Genome, Transmembrane



[View online »](#)

**Product images:**

Anti-TSPAN13 antibody IHC of human prostate. Immunohistochemistry of formalin-fixed, paraffin-embedded tissue after heat-induced antigen retrieval.



Anti-TSPAN13 antibody IHC of human stomach. Immunohistochemistry of formalin-fixed, paraffin-embedded tissue after heat-induced antigen retrieval.