

Product datasheet for **TA317467**

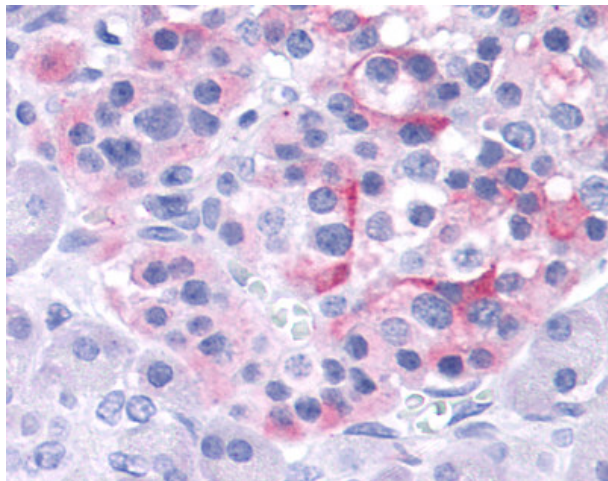
TRPV4 Rabbit Polyclonal Antibody

Product data:

Product Type:	Primary Antibodies
Applications:	IHC
Recommended Dilution:	IHC-P (5 - 7.5 µg/ml)
Reactivity:	Bovine, Dog, Gorilla, Human, Monkey, Mouse, Pig, Rat, Gibbon, Hamster, Horse (Predicted: Rabbit, Chicken)
Host:	Rabbit
Isotype:	IgG
Clonality:	Polyclonal
Immunogen:	TRPV4 antibody was raised against synthetic 20 amino acid peptide from internal region of human TRPV4. Percent identity with other species by BLAST analysis: Human, Gorilla, Gibbon, Monkey, Marmoset, Mouse, Rat, Hamster, Panda, Bovine, Dog, Horse, Pig (100%); Elephant, Rabbit (95%); Turkey, Chicken, Platypus (90%); Xenopus (85%); Stickleback, Zebrafish (80%).
Formulation:	PBS, 0.1% sodium azide.
Concentration:	lot specific
Purification:	Immunoaffinity Chromatography
Conjugation:	Unconjugated
Storage:	Store at -20°C as received.
Stability:	Stable for 12 months from date of receipt.
Gene Name:	transient receptor potential cation channel subfamily V member 4
Database Link:	NP_671737 Entrez Gene 63873 MouseEntrez Gene 66026 RatEntrez Gene 486308 DogEntrez Gene 709605 MonkeyEntrez Gene 59341 Human Q9HBA0
Synonyms:	BCYM3; CMT2C; HMSN2C; OTRPC4; SMAL; SPSMA; SSQTL1; TRP12; VRL2; VROAC
Note:	Specific for Human TRPV4. BLAST analysis of the peptide immunogen showed no homology with other human proteins.
Protein Families:	Druggable Genome, Ion Channels: Transient receptor potential, Transmembrane



[View online »](#)

Product images:

Anti-TRPV4 antibody IHC of human pancreas, islet. Immunohistochemistry of formalin-fixed, paraffin-embedded tissue after heat-induced antigen retrieval.