

Product datasheet for **TA317465**

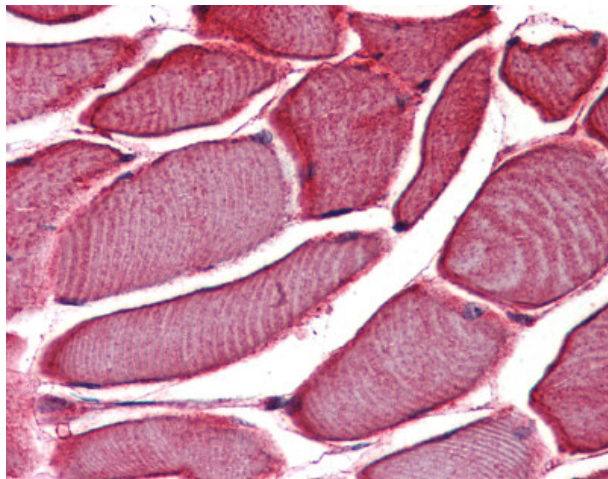
VRL1 (TRPV2) Rabbit Polyclonal Antibody

Product data:

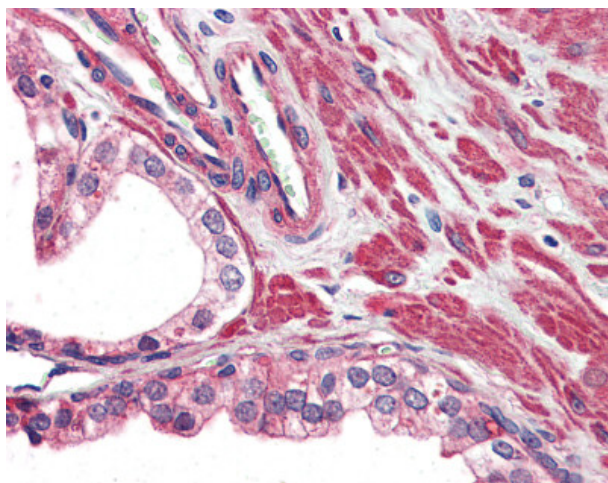
Product Type:	Primary Antibodies
Applications:	IHC
Recommended Dilution:	IHC-P (5 µg/ml)
Reactivity:	Human
Host:	Rabbit
Isotype:	IgG
Clonality:	Polyclonal
Immunogen:	VRL1 / TRPV2 antibody was raised against synthetic 15 amino acid peptide from internal region of human TRPV2. Percent identity with other species by BLAST analysis: Human (100%); Chimpanzee, Orangutan (93%); Gibbon, Monkey (80%).
Formulation:	PBS, 0.1% sodium azide.
Concentration:	lot specific
Purification:	Immunoaffinity Chromatography
Conjugation:	Unconjugated
Storage:	Store at -20°C as received.
Stability:	Stable for 12 months from date of receipt.
Gene Name:	transient receptor potential cation channel subfamily V member 2
Database Link:	NP_057197 Entrez Gene 51393 Human Q9Y5S1
Synonyms:	VRL; VRL-1; VRL1
Note:	Specific for Human TRPV2. BLAST analysis of the peptide immunogen showed no homology with other human proteins.
Protein Families:	Druggable Genome, Ion Channels: Transient receptor potential, Transmembrane



[View online »](#)

Product images:

Anti-TRPV2 antibody IHC of human skeletal muscle. Immunohistochemistry of formalin-fixed, paraffin-embedded tissue after heat-induced antigen retrieval.



Anti-TRPV2 antibody IHC of human prostate. Immunohistochemistry of formalin-fixed, paraffin-embedded tissue after heat-induced antigen retrieval.