

Product datasheet for **TA317454**

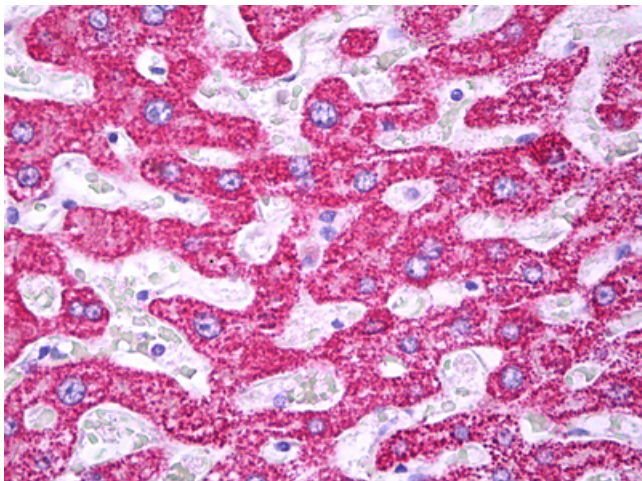
TOMM22 Mouse Monoclonal Antibody [Clone ID: 4G4]

Product data:

Product Type:	Primary Antibodies
Clone Name:	4G4
Applications:	IHC
Recommended Dilution:	IF (10 µg/ml), IHC-P (10 µg/ml), WB
Reactivity:	Human, Mouse, Rat
Host:	Mouse
Isotype:	IgG2a, kappa
Clonality:	Monoclonal
Immunogen:	TOMM22 / TOM22 antibody was raised against tTOMM22 (AAH09363, 1 a.a. ~ 143 a.a) full length recombinant protein with GST tag. MW of the GST tag alone is 26 KDa.
Formulation:	PBS, pH 7.2. Sourced in Ascites.
Concentration:	lot specific
Purification:	Protein A Column
Conjugation:	Unconjugated
Storage:	Store at -20°C as received.
Stability:	Stable for 12 months from date of receipt.
Gene Name:	translocase of outer mitochondrial membrane 22
Database Link:	NP_064628 Entrez Gene 223696 MouseEntrez Gene 300075 RatEntrez Gene 56993 Human Q9NS69
Synonyms:	1C9-2; MST065; MSTP065; TOM22
Note:	Specific for Human TOMM22
Protein Families:	Druggable Genome, Transmembrane



[View online »](#)

Product images:

Anti-TOMM22 antibody IHC of human liver, hepatocytes. Immunohistochemistry of formalin-fixed, paraffin-embedded tissue after heat-induced antigen retrieval. Antibody concentration 10 ug/ml.