

## Product datasheet for **TA317439**

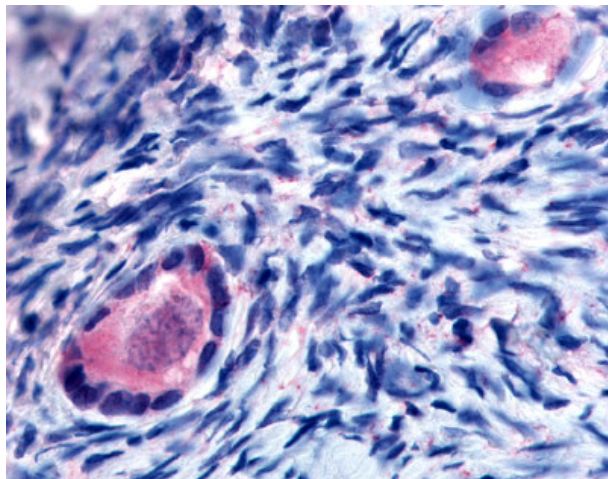
### **RXYLT1 Rabbit Polyclonal Antibody**

#### **Product data:**

<b>Product Type:</b>	Primary Antibodies
<b>Applications:</b>	IHC
<b>Recommended Dilution:</b>	IHC-P (20 µg/ml)
<b>Reactivity:</b>	Human, Gibbon (Predicted: Monkey)
<b>Host:</b>	Rabbit
<b>Isotype:</b>	IgG
<b>Clonality:</b>	Polyclonal
<b>Immunogen:</b>	TMEM5 antibody was raised against synthetic 17 amino acid peptide from extracellular domain of human TMEM5. Percent identity with other species by BLAST analysis: Human, Gibbon, Monkey (100%); Gorilla, Marmoset, Elephant (94%); Rat, Hamster, Horse (88%); Dog, Panda, Pig (82%).
<b>Formulation:</b>	PBS, 0.1% sodium azide.
<b>Concentration:</b>	lot specific
<b>Purification:</b>	Immunoaffinity Chromatography
<b>Conjugation:</b>	Unconjugated
<b>Storage:</b>	Store at -20°C as received.
<b>Stability:</b>	Stable for 12 months from date of receipt.
<b>Gene Name:</b>	transmembrane protein 5
<b>Database Link:</b>	<a href="#">NP_055069</a> <a href="#">Entrez Gene 717102 Monkey</a> <a href="#">Entrez Gene 10329 Human</a> <a href="#">Q9Y2B1</a>
<b>Synonyms:</b>	HP10481; MDDGA10
<b>Note:</b>	Specific for Human TMEM5. BLAST analysis of the peptide immunogen showed no homology with other human proteins.
<b>Protein Families:</b>	Transmembrane



[View online »](#)

**Product images:**

Anti-TMEM5 antibody IHC of human ovary, oocytes. Immunohistochemistry of formalin-fixed, paraffin-embedded tissue after heat-induced antigen retrieval.