

Product datasheet for **TA317437**

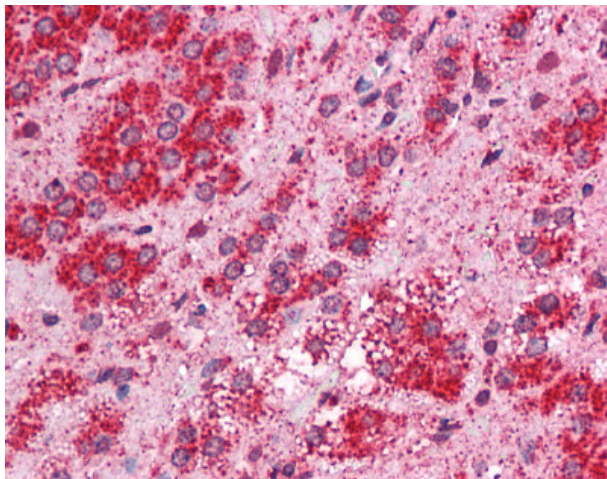
TMEM33 Rabbit Polyclonal Antibody

Product data:

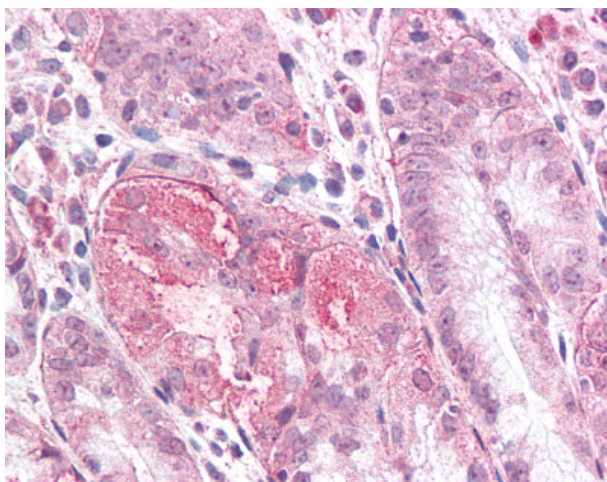
Product Type:	Primary Antibodies
Applications:	IHC
Recommended Dilution:	IHC-P (15 - 20 µg/ml)
Reactivity:	Chicken, Gorilla, Human, Monkey, Gibbon (Predicted: Mouse, Rat, Bat, Dog, Hamster, Horse, Pig)
Host:	Rabbit
Isotype:	IgG
Clonality:	Polyclonal
Immunogen:	TMEM33 antibody was raised against synthetic 18 amino acid peptide from internal region of human TMEM33. Percent identity with other species by BLAST analysis: Human, Gorilla, Gibbon, Monkey, Marmoset, Opossum, Chicken (100%); Mouse, Rat, Dog, Bat, Hamster, Panda, Horse, Pig, Turkey, Lizard (94%); Rabbit, Platypus (89%); Bovine, Elephant, Xenopus, Salmon (83%).
Formulation:	PBS, 0.1% sodium azide.
Concentration:	lot specific
Purification:	Immunoaffinity Chromatography
Conjugation:	Unconjugated
Storage:	Store at -20°C as received.
Stability:	Stable for 12 months from date of receipt.
Gene Name:	transmembrane protein 33
Database Link:	NP_060596 Entrez Gene 59303 Rat Entrez Gene 67878 Mouse Entrez Gene 612937 Dog Entrez Gene 702063 Monkey Entrez Gene 55161 Human P57088
Synonyms:	1600019D15Rik; SHINC-3; SHINC3
Note:	Specific for Human TMEM33. BLAST analysis of the peptide immunogen showed no homology with other human proteins.
Protein Families:	Transmembrane



[View online »](#)

Product images:

Anti-TMEM33 antibody IHC of human adrenal. Immunohistochemistry of formalin-fixed, paraffin-embedded tissue after heat-induced antigen retrieval.



Anti-TMEM33 antibody IHC of human stomach. Immunohistochemistry of formalin-fixed, paraffin-embedded tissue after heat-induced antigen retrieval.