

## Product datasheet for **TA317436**

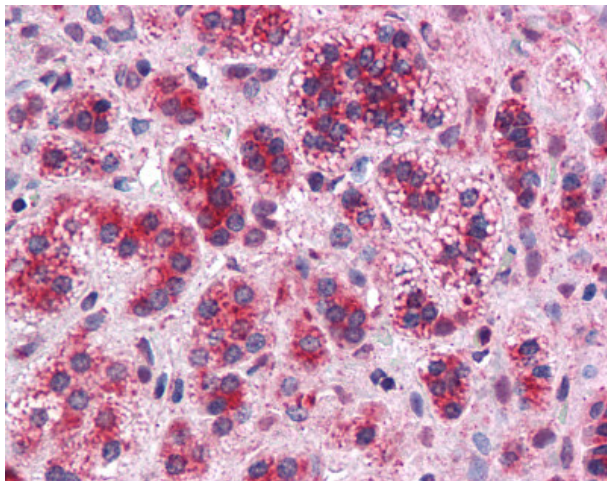
### TMEM33 Rabbit Polyclonal Antibody

#### Product data:

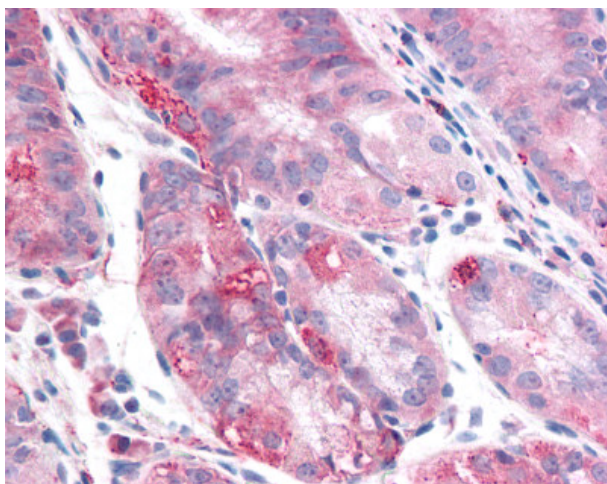
Product Type:	Primary Antibodies
Applications:	IHC
Recommended Dilution:	IHC-P (10 µg/ml)
Reactivity:	Bat, Bovine, Dog, Gorilla, Human, Monkey, Pig, Gibbon, Horse (Predicted: Mouse, Rat, Hamster, Rabbit, Chicken, Xenopus, Zebrafish)
Host:	Rabbit
Isotype:	IgG
Clonality:	Polyclonal
Immunogen:	TMEM33 antibody was raised against synthetic 18 amino acid peptide from internal region of human TMEM33. Percent identity with other species by BLAST analysis: Human, Gorilla, Gibbon, Monkey, Marmoset, Bovine, Dog, Bat, Elephant, Panda, Horse, Pig, Opossum, Platypus (100%); Mouse, Rat, Hamster, Rabbit, Turkey, Chicken, Lizard, Xenopus, Zebrafish (94%); Catfish, Salmon, Stickleback, Sea anemone (89%); Drosophila (83%).
Formulation:	PBS, 0.1% sodium azide.
Concentration:	lot specific
Purification:	Immunoaffinity Chromatography
Conjugation:	Unconjugated
Storage:	Store at -20°C as received.
Stability:	Stable for 12 months from date of receipt.
Gene Name:	transmembrane protein 33
Database Link:	<a href="#">NP_060596</a> <a href="#">Entrez Gene 59303 Rat</a> <a href="#">Entrez Gene 67878 Mouse</a> <a href="#">Entrez Gene 612937 Dog</a> <a href="#">Entrez Gene 702063 Monkey</a> <a href="#">Entrez Gene 55161 Human</a> <a href="#">P57088</a>
Synonyms:	1600019D15Rik; SHINC-3; SHINC3
Note:	Specific for Human TMEM33. BLAST analysis of the peptide immunogen showed no homology with other human proteins.
Protein Families:	Transmembrane



[View online »](#)

**Product images:**

Anti-TMEM33 antibody IHC of human adrenal. Immunohistochemistry of formalin-fixed, paraffin-embedded tissue after heat-induced antigen retrieval.



Anti-TMEM33 antibody IHC of human stomach. Immunohistochemistry of formalin-fixed, paraffin-embedded tissue after heat-induced antigen retrieval.