

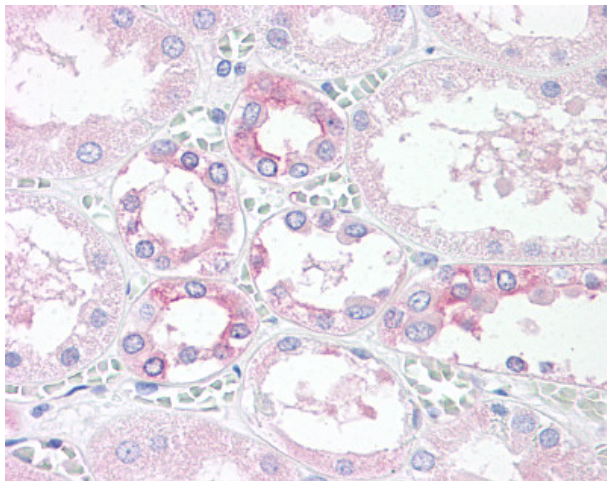
Product datasheet for **TA317432**

TM9SF4 Rabbit Polyclonal Antibody

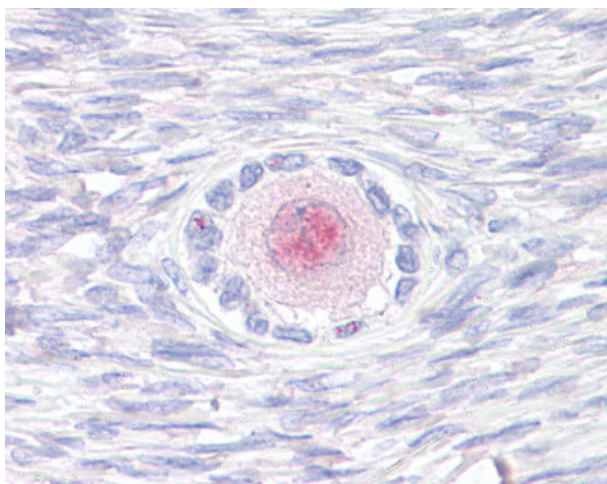
Product data:

Product Type:	Primary Antibodies
Applications:	IHC
Recommended Dilution:	IHC-P (15 - 20 µg/ml)
Reactivity:	Chimpanzee, Gorilla, Human, Monkey, Mouse, Rabbit, Gibbon, Orang-Utan, Guinea Pig (Predicted: Rat, Bat, Dog, Horse, Pig)
Host:	Rabbit
Isotype:	IgG
Clonality:	Polyclonal
Immunogen:	TM9SF4 antibody was raised against synthetic 17 amino acid peptide from internal region of human TM9SF4. Percent identity with other species by BLAST analysis: Human, Chimpanzee, Gorilla, Orangutan, Gibbon, Monkey, Galago, Marmoset, Mouse, Rabbit, Guinea pig (100%); Rat, Elephant, Panda, Dog, Bat, Horse, Pig (94%); Bovine, Opossum, Zebra finch (88%); Turkey, Chicken (82%).
Formulation:	PBS, 0.1% sodium azide.
Concentration:	lot specific
Purification:	Immunoaffinity Chromatography
Conjugation:	Unconjugated
Storage:	Store at -20°C as received.
Stability:	Stable for 12 months from date of receipt.
Gene Name:	transmembrane 9 superfamily member 4
Database Link:	NP_055557 Entrez Gene 99237 Mouse Entrez Gene 296279 Rat Entrez Gene 477191 Dog Entrez Gene 712260 Monkey Entrez Gene 9777 Human Q92544
Synonyms:	dj836N17.2
Note:	Specific for Human TM9SF4. BLAST analysis of the peptide immunogen showed no homology with other human proteins, except ALAS2 (47%).
Protein Families:	Transmembrane

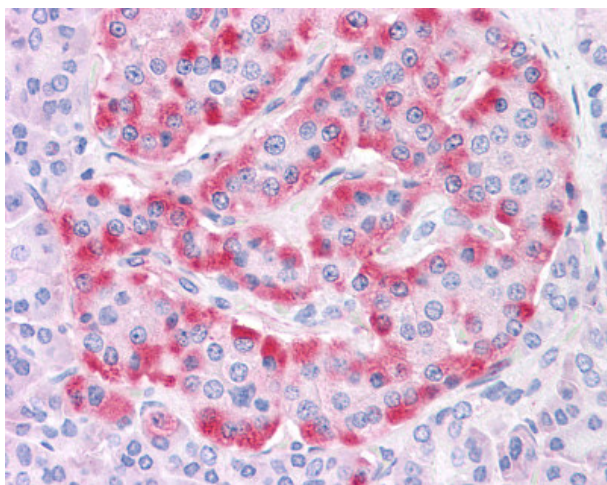

[View online »](#)

Product images:


Anti-TM9SF4 antibody IHC of human, kidney. Immunohistochemistry of formalin-fixed, paraffin-embedded tissue after heat-induced antigen retrieval.



Anti-TM9SF4 antibody IHC of human, ovary. Immunohistochemistry of formalin-fixed, paraffin-embedded tissue after heat-induced antigen retrieval.



Anti-TM9SF4 antibody IHC of human pancreas islet of Langerhans. Immunohistochemistry of formalin-fixed, paraffin-embedded tissue after heat-induced antigen retrieval.