

Product datasheet for **TA317427**

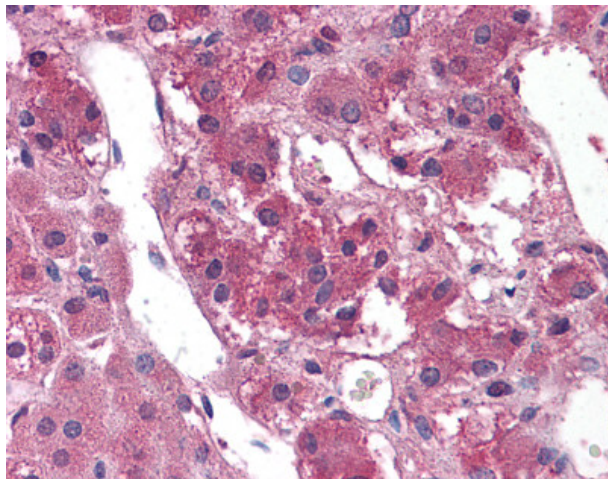
TM9SF1 Rabbit Polyclonal Antibody

Product data:

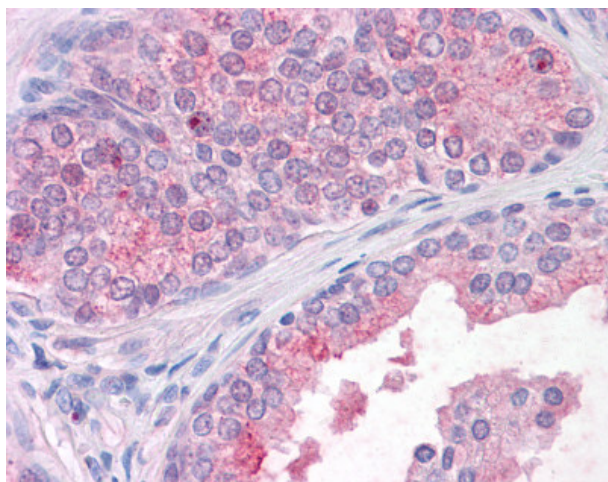
Product Type:	Primary Antibodies
Applications:	IHC
Recommended Dilution:	IHC-P (15 - 20 µg/ml)
Reactivity:	Bovine, Chimpanzee, Dog, Gorilla, Human, Monkey, Mouse, Pig, Rat, Gibbon, Hamster, Horse, Orang-Utan (Predicted: Guinea Pig)
Host:	Rabbit
Isotype:	IgG
Clonality:	Polyclonal
Immunogen:	TM9SF1 antibody was raised against synthetic 19 amino acid peptide from internal region of human TM9SF1. Percent identity with other species by BLAST analysis: Human, Chimpanzee, Gorilla, Orangutan, Gibbon, Monkey, Marmoset, Mouse, Rat, Hamster, Elephant, Panda, Dog, Bovine, Horse, Pig (100%); Guinea pig, Lizard, Seabass, Stickleback, Medaka (95%); Opossum (89%).
Formulation:	PBS, 0.1% sodium azide.
Concentration:	lot specific
Purification:	Immunoaffinity Chromatography
Conjugation:	Unconjugated
Storage:	Store at -20°C as received.
Stability:	Stable for 12 months from date of receipt.
Gene Name:	transmembrane 9 superfamily member 1
Database Link:	NP_006396 Entrez Gene 74140 MouseEntrez Gene 361043 RatEntrez Gene 480261 DogEntrez Gene 715472 MonkeyEntrez Gene 10548 Human O15321
Synonyms:	HMP70; MP70
Note:	Specific for Human TM9SF1. BLAST analysis of the peptide immunogen showed no homology with other human proteins.
Protein Families:	Transmembrane



[View online »](#)

Product images:

Anti-TM9SF1 antibody IHC of human, adrenal. Immunohistochemistry of formalin-fixed, paraffin-embedded tissue after heat-induced antigen retrieval.



Anti-TM9SF1 antibody IHC of human, prostate. Immunohistochemistry of formalin-fixed, paraffin-embedded tissue after heat-induced antigen retrieval.