

Product datasheet for **TA317426**

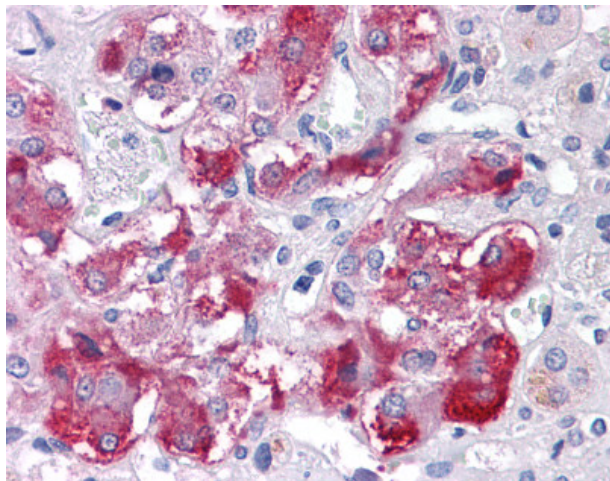
TM9SF1 Rabbit Polyclonal Antibody

Product data:

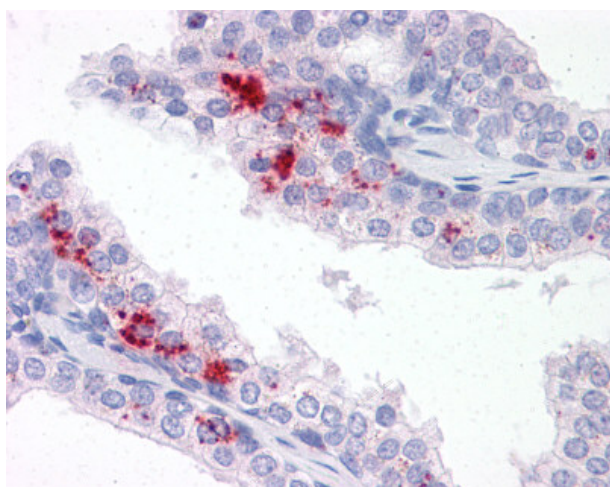
Product Type:	Primary Antibodies
Applications:	IHC
Recommended Dilution:	IHC-P (15 µg/ml)
Reactivity:	Gorilla, Human, Gibbon, Orang-Utan (Predicted: Monkey, Hamster)
Host:	Rabbit
Isotype:	IgG
Clonality:	Polyclonal
Immunogen:	TM9SF1 antibody was raised against synthetic 17 amino acid peptide from N-terminus of human TM9SF1. Percent identity with other species by BLAST analysis: Human, Gorilla, Orangutan, Gibbon, Monkey (100%); Marmoset, Hamster, Panda (94%); Mouse, Rat (88%); Bovine, Horse, Pig (82%).
Formulation:	PBS, 0.1% sodium azide.
Concentration:	lot specific
Purification:	Immunoaffinity Chromatography
Conjugation:	Unconjugated
Storage:	Store at -20°C as received.
Stability:	Stable for 12 months from date of receipt.
Gene Name:	transmembrane 9 superfamily member 1
Database Link:	NP_006396 Entrez Gene 715472 Monkey Entrez Gene 10548 Human O15321
Synonyms:	HMP70; MP70
Note:	Specific for Human TM9SF1. BLAST analysis of the peptide immunogen showed no homology with other human proteins.
Protein Families:	Transmembrane



[View online »](#)

Product images:

Anti-TM9SF1 antibody IHC of human adrenal. Immunohistochemistry of formalin-fixed, paraffin-embedded tissue after heat-induced antigen retrieval.



Anti-TM9SF1 antibody IHC of human prostate. Immunohistochemistry of formalin-fixed, paraffin-embedded tissue after heat-induced antigen retrieval.