

Product datasheet for **TA317414**

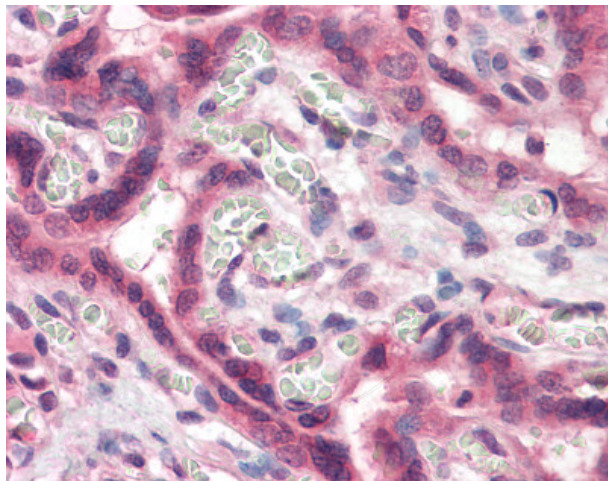
Spasmolytic Polypeptide (TFF2) Rabbit Polyclonal Antibody

Product data:

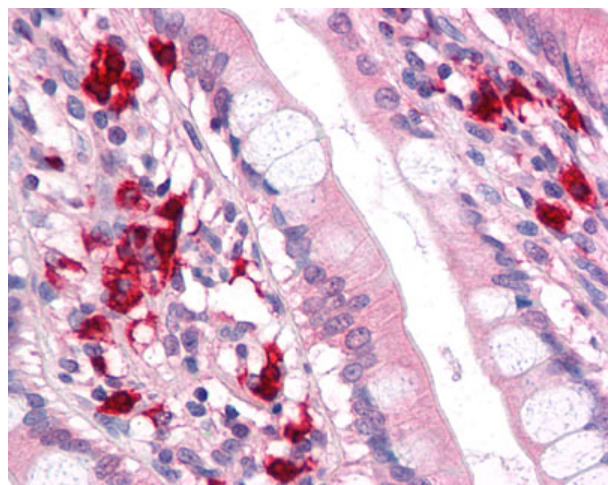
Product Type:	Primary Antibodies
Applications:	IHC
Recommended Dilution:	IHC-P (10 µg/ml)
Reactivity:	Gorilla, Human, Gibbon (Predicted: Monkey, Dog)
Host:	Rabbit
Isotype:	IgG
Clonality:	Polyclonal
Immunogen:	TFF2 / SP antibody was raised against synthetic 11 amino acid peptide from internal region of human TFF2. Percent identity with other species by BLAST analysis: Human, Gorilla, Gibbon (100%); Marmoset, Dog (91%); Monkey, Mouse, Nematode (82%).
Formulation:	PBS, 0.1% sodium azide.
Concentration:	lot specific
Purification:	Immunoaffinity Chromatography
Conjugation:	Unconjugated
Storage:	Store at -20°C as received.
Stability:	Stable for 12 months from date of receipt.
Gene Name:	trefoil factor 2
Database Link:	NP_005414 Entrez Gene 403489 Dog Entrez Gene 714550 Monkey Entrez Gene 7032 Human Q03403
Synonyms:	SML1; SP
Note:	Specific for Human TFF2. BLAST analysis of the peptide immunogen showed no homology with other human proteins.
Protein Families:	Druggable Genome, Secreted Protein



[View online »](#)

Product images:

Anti-TFF2 antibody IHC of human placenta. Immunohistochemistry of formalin-fixed, paraffin-embedded tissue after heat-induced antigen retrieval.



Anti-TFF2 antibody IHC of human small intestine. Immunohistochemistry of formalin-fixed, paraffin-embedded tissue after heat-induced antigen retrieval.