

## Product datasheet for **TA317411**

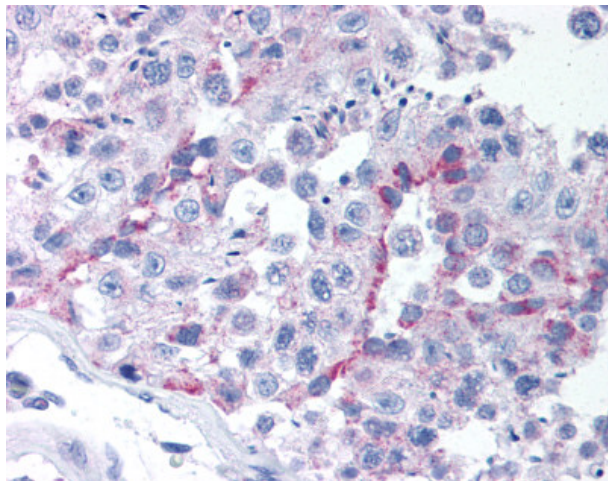
### **TBX6 Rabbit Polyclonal Antibody**

#### **Product data:**

Product Type:	Primary Antibodies
Applications:	IHC
Recommended Dilution:	ELISA (1:000 - 1:1000), IHC-P (10 µg/ml)
Reactivity:	Human
Host:	Rabbit
Isotype:	IgG
Clonality:	Polyclonal
Immunogen:	TBX6 antibody was raised against synthetic peptide from human TBX6.
Formulation:	PBS, 0.1% sodium azide.
Concentration:	lot specific
Purification:	Protein G Column
Conjugation:	Unconjugated
Storage:	Store at -20°C as received.
Stability:	Stable for 12 months from date of receipt.
Gene Name:	T-box 6
Database Link:	<a href="#">NP_004599</a> <a href="#">Entrez Gene 6911 Human</a> <a href="#">O95947</a>
Synonyms:	SCDO5
Note:	Specific for Amino acids 361 to 377 of human TBX6
Protein Families:	Transcription Factors



[View online »](#)

**Product images:**

Anti-TBX6 antibody IHC of human testis. Immunohistochemistry of formalin-fixed, paraffin-embedded tissue after heat-induced antigen retrieval. Antibody concentration 10 ug/ml.