

Product datasheet for **TAS17408**

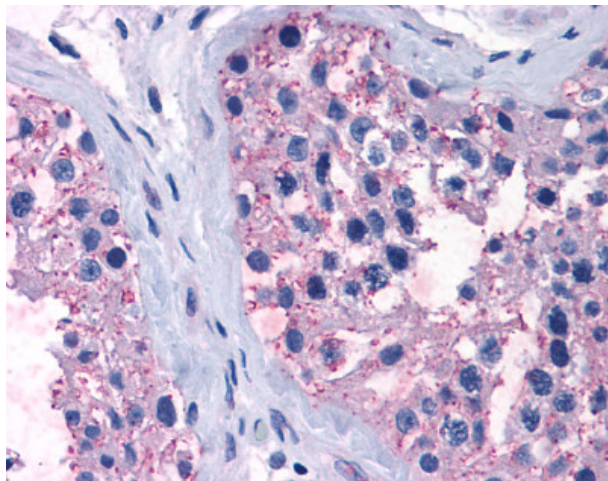
TAS1R1 Rabbit Polyclonal Antibody

Product data:

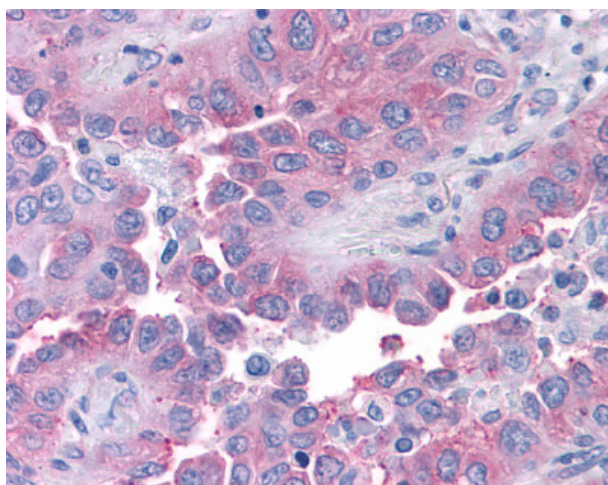
Product Type:	Primary Antibodies
Applications:	IHC
Recommended Dilution:	IHC-P (6 µg/ml)
Reactivity:	Bovine, Dog, Gorilla, Human, Pig, Gibbon, Horse (Predicted: Monkey, Mouse, Rat, Hamster, Rabbit)
Host:	Rabbit
Isotype:	IgG
Clonality:	Polyclonal
Immunogen:	Synthetic 16 amino acid peptide from 3rd cytoplasmic domain of human TAS1R1. Percent identity with other species by BLAST analysis: Human, Gorilla, Gibbon, Monkey, Bovine, Cat, Dog, Elephant, Panda, Horse, Pig (100%); Marmoset, Mouse, Rat, Hamster, Rabbit
Formulation:	PBS, less than 0.1% sodium azide.
Concentration:	lot specific
Purification:	Immunoaffinity Chromatography
Conjugation:	Unconjugated
Storage:	Store at -20°C as received.
Stability:	Stable for 12 months from date of receipt.
Gene Name:	taste 1 receptor member 1
Database Link:	NP_619642 Entrez Gene 29407 Rat Entrez Gene 110326 Mouse Entrez Gene 489633 Dog Entrez Gene 720987 Monkey Entrez Gene 80835 Human Q7RTX1
Synonyms:	GM148; GPR70; T1R1; TR1
Note:	Specific for Human TAS1R1. BLAST analysis of the peptide immunogen showed no homology with other human proteins, except TAS1R2 (69%).
Protein Families:	Druggable Genome, Transmembrane
Protein Pathways:	Taste transduction



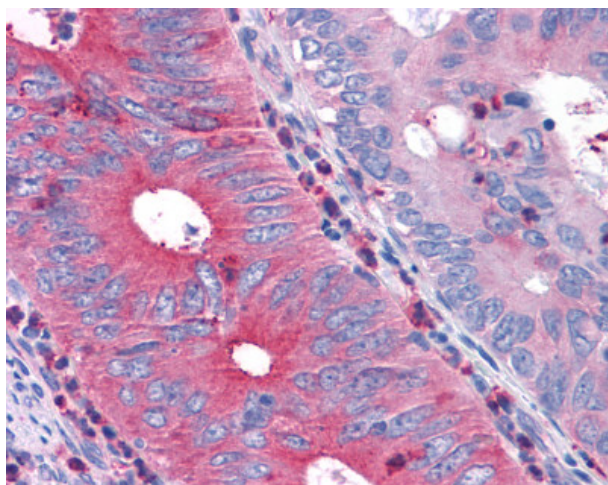
[View online »](#)

Product images:

Anti-TAS1R1 antibody IHC of human testis.
Immunohistochemistry of formalin-fixed,
paraffin-embedded tissue after heat-induced
antigen retrieval.



Anti-T1R1 / TAS1R1 antibody IHC of human Lung,
Non-Small Cell Carcinoma.
Immunohistochemistry of formalin-fixed,
paraffin-embedded tissue after heat-induced
antigen retrieval.



Anti-T1R1 / TAS1R1 antibody IHC of human Colon, Carcinoma. Immunohistochemistry of formalin-fixed, paraffin-embedded tissue after heat-induced antigen retrieval.