

## Product datasheet for **TA317404**

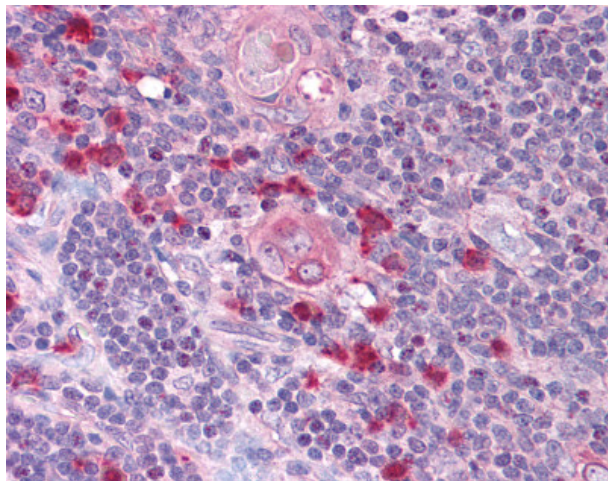
### TAP2 Rabbit Polyclonal Antibody

#### Product data:

Product Type:	Primary Antibodies
Applications:	IHC
Recommended Dilution:	ELISA (1:000 - 1:1000), IHC-P (10 µg/ml)
Reactivity:	Human
Host:	Rabbit
Isotype:	IgG
Clonality:	Polyclonal
Immunogen:	TAP2 antibody was raised against synthetic peptide from human TAP2.
Formulation:	PBS, 0.1% sodium azide.
Concentration:	lot specific
Conjugation:	Unconjugated
Storage:	Store at -20°C as received.
Stability:	Stable for 12 months from date of receipt.
Gene Name:	transporter 2, ATP-binding cassette, sub-family B (MDR/TAP)
Database Link:	<a href="#">NP_000535</a> <a href="#">Entrez Gene 6891 Human</a> <a href="#">Q03519</a>
Synonyms:	ABC18; ABCB3; APT2; D6S217E; PSF-2; PSF2; RING11
Note:	Specific for Amino acids 689 to 703 of human TAP2
Protein Families:	Druggable Genome, Transmembrane
Protein Pathways:	ABC transporters, Antigen processing and presentation, Primary immunodeficiency



[View online »](#)

**Product images:**

Anti-TAP2 antibody IHC of human thymus. Immunohistochemistry of formalin-fixed, paraffin-embedded tissue after heat-induced antigen retrieval. Antibody concentration 10 ug/ml.