

Product datasheet for **TA317389**

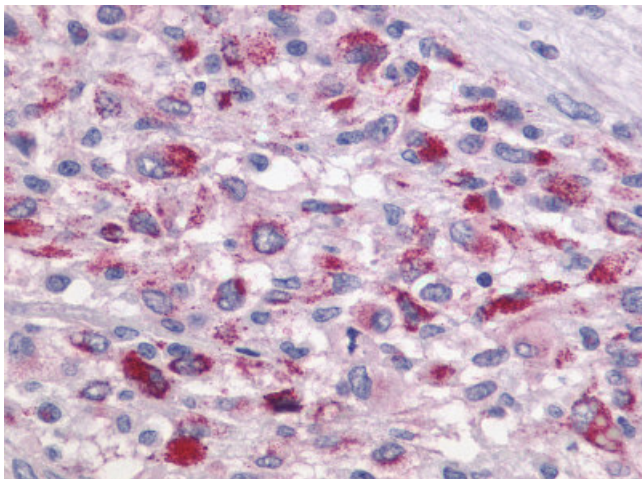
TA1 (TAAR1) Rabbit Polyclonal Antibody

Product data:

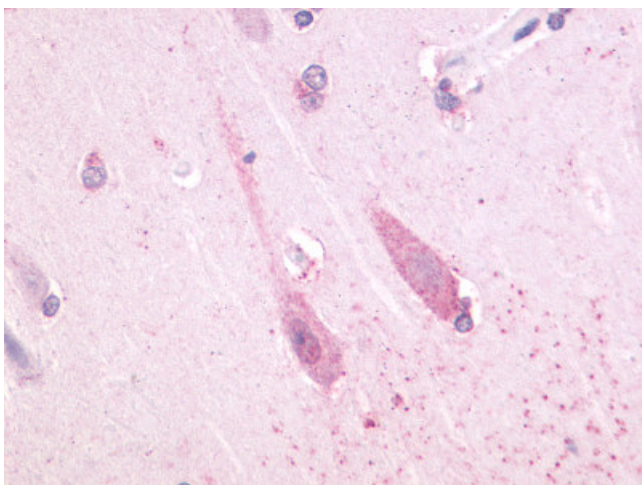
Product Type:	Primary Antibodies
Applications:	IHC
Recommended Dilution:	IHC-P (8 - 19 µg/ml), WB
Reactivity:	Human
Host:	Rabbit
Isotype:	IgG
Clonality:	Polyclonal
Immunogen:	TAAR1 / TA1 antibody was raised against synthetic 19 amino acid peptide from 3rd cytoplasmic domain of human TAAR1. Percent identity with other species by BLAST analysis: Human (100%); Chimpanzee (95%); Gorilla, Orangutan, Monkey (89%); Gibbon (84%).
Formulation:	PBS, 0.1% sodium azide.
Concentration:	lot specific
Purification:	Immunoaffinity Chromatography
Conjugation:	Unconjugated
Storage:	Store at -20°C as received.
Stability:	Stable for 12 months from date of receipt.
Gene Name:	trace amine associated receptor 1
Database Link:	NP_612200 Entrez Gene 134864 Human Q96R10
Synonyms:	TA1; TAR1; TRAR1
Note:	Specific for Human TAAR1. BLAST analysis of the peptide immunogen showed no homology with other human proteins.
Protein Families:	Druggable Genome, GPCR, Transmembrane
Protein Pathways:	Neuroactive ligand-receptor interaction



[View online »](#)

Product images:

Anti-TAAR1 / TA1 antibody IHC of human Brain, Glioblastoma. Immunohistochemistry of formalin-fixed, paraffin-embedded tissue after heat-induced antigen retrieval.



Anti-TAAR1 antibody IHC of human brain, neuron. Immunohistochemistry of formalin-fixed, paraffin-embedded tissue after heat-induced antigen retrieval.