

## Product datasheet for **TA317388**

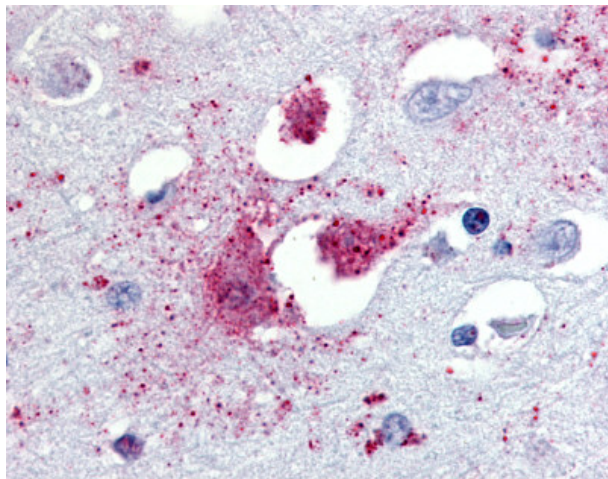
### TA1 (TAAR1) Rabbit Polyclonal Antibody

#### Product data:

Product Type:	Primary Antibodies
Applications:	IHC
Recommended Dilution:	IHC-P (1.3 µg/ml)
Reactivity:	Chimpanzee, Human, Monkey, Gibbon
Host:	Rabbit
Isotype:	IgG
Clonality:	Polyclonal
Immunogen:	TAAR1 / TA1 antibody was raised against synthetic 16 amino acid peptide from N-terminus of human TAAR1. Percent identity with other species by BLAST analysis: Human, Chimpanzee, Gibbon, Monkey, Marmoset, Tamarin (100%); Orangutan, Cat, Horse (88%); Bovine, Elephant, Panda, Rabbit, Pig (81%).
Formulation:	PBS, 0.1% sodium azide.
Concentration:	lot specific
Purification:	Immunoaffinity Chromatography
Conjugation:	Unconjugated
Storage:	Store at -20°C as received.
Stability:	Stable for 12 months from date of receipt.
Gene Name:	trace amine associated receptor 1
Database Link:	<a href="#">NP_612200</a> <a href="#">Entrez Gene 708944 Monkey</a> <a href="#">Entrez Gene 134864 Human</a> <a href="#">Q96R10</a>
Synonyms:	TA1; TAR1; TRAR1
Note:	Specific for Human TAAR1. BLAST analysis of the peptide immunogen showed no homology with other human proteins.
Protein Families:	Druggable Genome, GPCR, Transmembrane
Protein Pathways:	Neuroactive ligand-receptor interaction



[View online »](#)

**Product images:**

Anti-TAAR1 antibody IHC of human brain, amygdala. Immunohistochemistry of formalin-fixed, paraffin-embedded tissue after heat-induced antigen retrieval.