

Product datasheet for **TA317387**

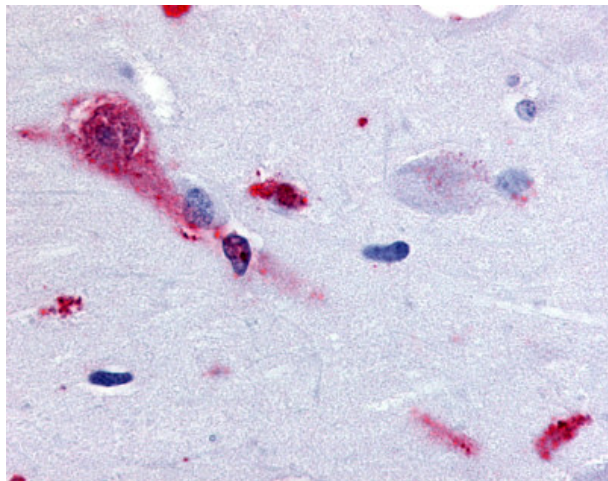
TA1 (TAAR1) Rabbit Polyclonal Antibody

Product data:

| | |
|-----------------------|---|
| Product Type: | Primary Antibodies |
| Applications: | IHC |
| Recommended Dilution: | IHC-P (28 µg/ml) |
| Reactivity: | Chimpanzee, Human, Monkey |
| Host: | Rabbit |
| Isotype: | IgG |
| Clonality: | Polyclonal |
| Immunogen: | TAAR1 / TA1 antibody was raised against synthetic 19 amino acid peptide from 3rd cytoplasmic domain of human TAAR1. Percent identity with other species by BLAST analysis: Human, Chimpanzee, Monkey (100%); Orangutan (95%); Gibbon, Marmoset, Elephant (89%); Tamarin, Rabbit, Pig (84%). |
| Formulation: | PBS, 0.1% sodium azide. |
| Concentration: | lot specific |
| Purification: | Immunoaffinity Chromatography |
| Conjugation: | Unconjugated |
| Storage: | Store at -20°C as received. |
| Stability: | Stable for 12 months from date of receipt. |
| Gene Name: | trace amine associated receptor 1 |
| Database Link: | NP_612200 Entrez Gene 708944 Monkey Entrez Gene 134864 Human Q96R1Q |
| Synonyms: | TA1; TAR1; TRAR1 |
| Note: | Specific for Human TAAR1. BLAST analysis of the peptide immunogen showed no homology with other human proteins, except CDC14A (37%). |
| Protein Families: | Druggable Genome, GPCR, Transmembrane |
| Protein Pathways: | Neuroactive ligand-receptor interaction |



[View online »](#)

Product images:

Anti-TAAR1 antibody IHC of human brain, amygdala. Immunohistochemistry of formalin-fixed, paraffin-embedded tissue after heat-induced antigen retrieval.