

## Product datasheet for **TA317383**

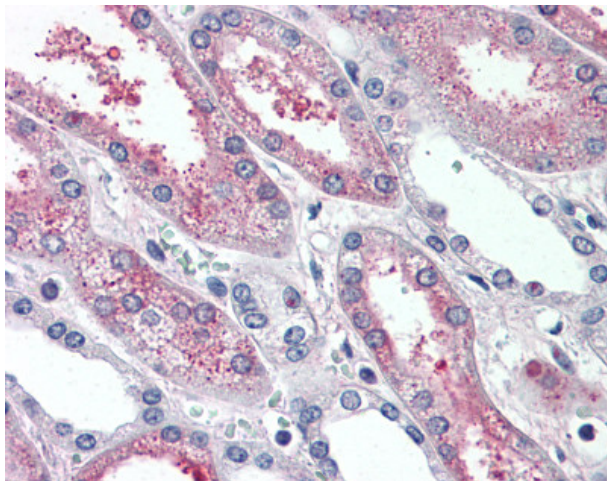
### SUSD2 Rabbit Polyclonal Antibody

#### Product data:

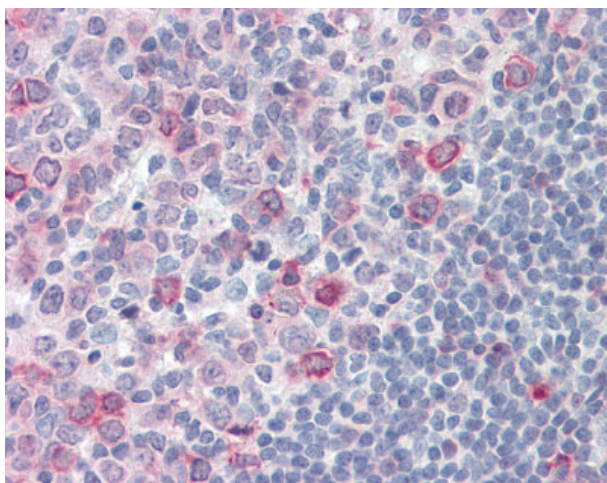
Product Type:	Primary Antibodies
Applications:	IHC
Recommended Dilution:	IHC-P (15 - 20 µg/ml)
Reactivity:	Gorilla, Human, Gibbon (Predicted: Rat)
Host:	Rabbit
Isotype:	IgG
Clonality:	Polyclonal
Immunogen:	SUSD2 antibody was raised against synthetic 17 amino acid peptide from internal region of human SUSD2. Percent identity with other species by BLAST analysis: Human, Gorilla, Gibbon (100%); Rat (94%).
Formulation:	PBS, 0.1% sodium azide.
Concentration:	lot specific
Purification:	Immunoaffinity Chromatography
Conjugation:	Unconjugated
Storage:	Store at -20°C as received.
Stability:	Stable for 12 months from date of receipt.
Gene Name:	sushi domain containing 2
Database Link:	<a href="#">NP_062547</a> <a href="#">Entrez Gene 294335 Rat</a> <a href="#">Entrez Gene 56241 Human</a> <a href="#">Q9UGT4</a>
Synonyms:	BK65A6.2
Note:	Specific for Human SUSD2. BLAST analysis of the peptide immunogen showed no homology with other human proteins.
Protein Families:	Transmembrane



[View online »](#)

**Product images:**

Anti-SUSD2 antibody IHC of human kidney. Immunohistochemistry of formalin-fixed, paraffin-embedded tissue after heat-induced antigen retrieval.



Anti-SUSD2 antibody IHC of human tonsil. Immunohistochemistry of formalin-fixed, paraffin-embedded tissue after heat-induced antigen retrieval.